




Parent Consultation Evening

27th March 2025

- Careers
- 6th Form @ Ormiston Forge
- Attendance @ Ormiston Forge
- Catering Services Update
- Any Other Business




Careers section on OFA website




DERMISTON
FORGE
ACADEMY


[HOME](#) [OUR ACADEMY](#) [KEY INFO](#) [FOR STUDENTS](#) [CURRICULUM](#) [SIXTH FORM](#) [Translate](#)




Careers at Forge →




Meet the Team →




Careers Resources and Useful Links →



Unifrog →

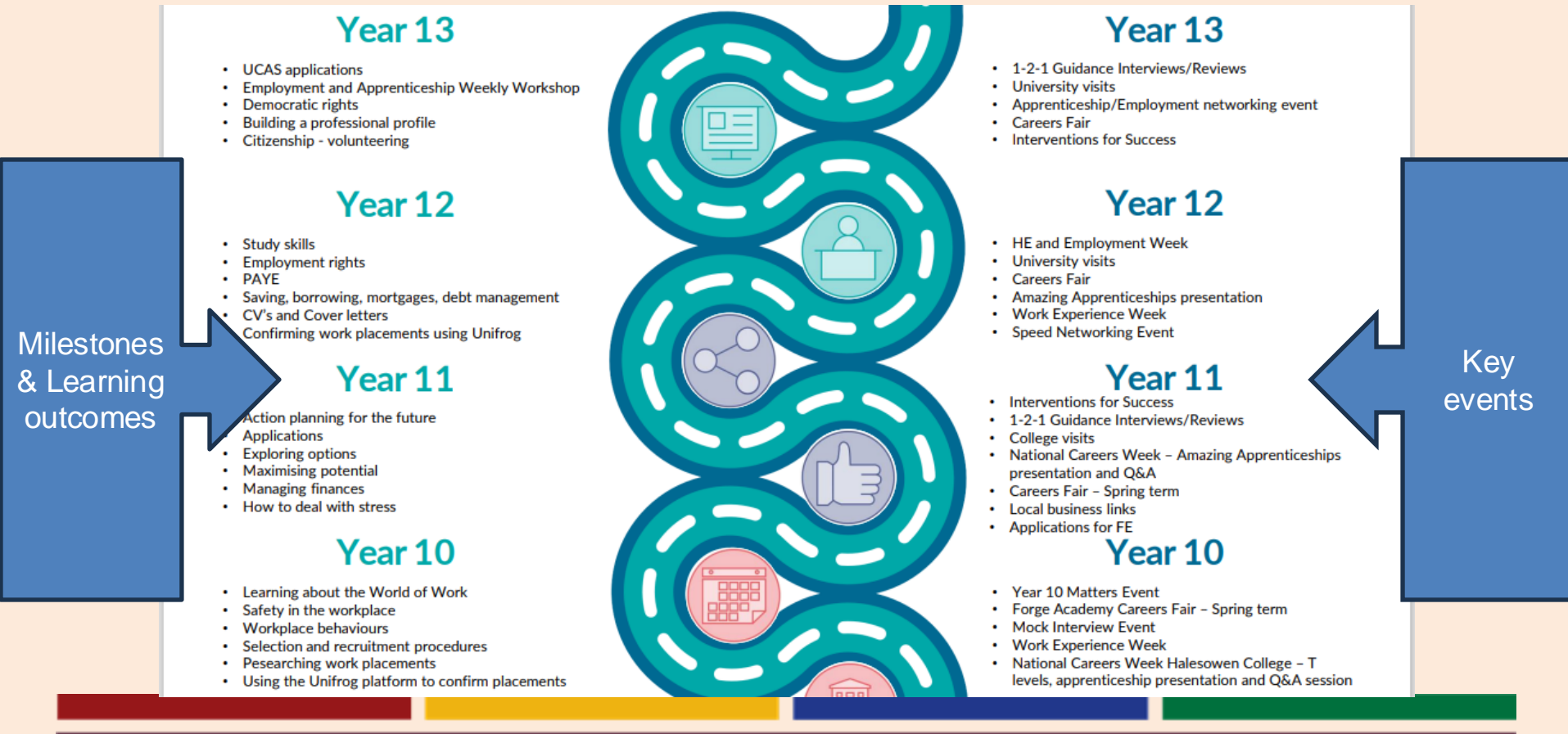


Information for Parents & Carers →



Measuring Our Provision →

The careers programme at Forge – Y10-13



The careers programme at Forge – Y7-9

Year 9

- Actively planning, prioritising and setting targets for the future
- Researching the learning and qualification requirements for different jobs and careers on Unifrog
- Developing employability skills
- Using LMI to support Key Stage 4 'option' choices

Year 8

- Discovering the range of jobs that exist
- Learning about equal opportunities in the workplace
- Challenging discrimination in the workplace
- Developing an understanding of the different career pathways

Year 7

- Who am I?
- How do I build self-esteem?
- Exploring opportunities through engagement in the academy's enrichment programme and house system
- Introduction to the careers team at Forge and Unifrog

Year 9

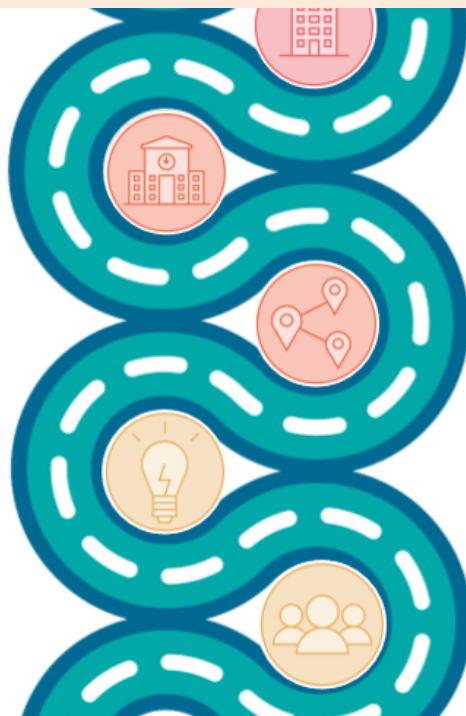
- British Army Days
- Forge Academy Careers Fair – Spring term
- National Careers Week Sandwell College – Apprenticeships Presentation and Q&A session
- Enterprise House Competition
- HE visit

Year 8

- Careers Champion House Competition
- Forge Academy Careers Fair – Spring term
- National Careers Week Dudley College – pathways presentation and Q&A session
- Enterprise House Competition

Year 7

- House events
- Enrichment clubs including careers club
- Careers Detective House Competition – Summer term
- Visit to the Black Country Careers Fair
- Enterprise House Competition



Milestones
& Learning
outcomes

Key
events



Quality assurance for careers provision

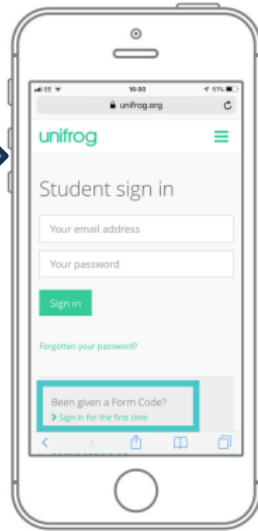
- We currently hold the silver Quality in Careers Standard Award – we are going for Gold this July! This is a bi-annual externally assessed national award that recognises excellence in careers provision
- The NEET figure for OFA for last year's leavers is 1.3%. The Sandwell figure is 1.7%. The West Midlands figure is 3.2%. The national figure is 4.1%
- Every term we complete a compass audit alongside our enterprise co-ordinator
<https://compass.careersandenterprise.co.uk/shared/LLjTo2f7qTy7HJ2I4G6pjtk3PWt7HIJ>
- The careers department has currently undergone our own Internal Leadership Review which involved analysing our careers provision with key staff in the academy such as our SENCO, SL for PSHE, HOY 11, Stem Ambassador, More Able Co-ordinator, AP for Personal Development – results from this review are found here:
<https://compassplus.careersandenterprise.co.uk/public/review/share/408ee5fc-69b3-4fc6-b95f-1896d096b11e>



We want parents to be more involved!

Coming out
next week to
all parents!

Induction day, get signed up!



Scan this QR code or go to
www.unifrog.org/code

You'll be asked for some details and a Sign
up Code. This is what you need:

OFACparent

After signing up, log into Unifrog using
your email address and password via the
student sign-in page!

unifrog

Sixth Form



Post 16 Options

Further
Education



Apprenticeship
or traineeship



20 hours of paid or
voluntary employment,
combined with part
time education or
training



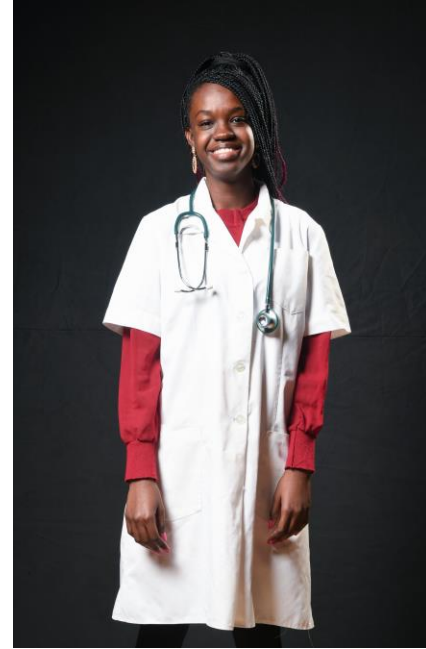
Pathways



A Level



Vocational



Medicine








A Level Pathway

Art Graphics	Criminology	Law
Art Textiles	Design & Technology (Product Design)	Maths
Biology	English Literature	Philosophy, Religion & Ethics
Business	Fine Art	Physics
Chemistry	Further Maths	Psychology
Classics	Geography	Sociology
Computer Science	History	Spanish



Vocational Pathway

	Care Pathway	BTEC Health & Social Care
	Active Pathway	BTEC Sport
	Business Pathway	BTEC Business
	Creative Pathway	BTEC Performing Arts and Music
	Flexible Pathway	BTES Business with 1 other BTEC Subject



Medicine Pathway



Why choose sixth form?

Support

Results

Enrichment

Student
Destinations





Attendance @ Ormiston Forge

How does attendance look at Forge?

- The national average attendance for secondary schools is currently 91.7%
- Attendance at Forge is currently 90.7%, however, this time last year attendance was at 89.9%. We have worked really hard with attendance across the Academy and have been tracking above last years figures every week.
- All pupils have an attendance target of 96% (equivalent to missing just 7 days over the academic year)
- We recognise that some children find it harder than others to attend school and we will always seek to work in partnership with parents to try to understand any barriers and offer support.
- We try to communicate regularly with you regarding your child's attendance and will always contact you if we have any concerns.
- Parents should report their child's absence and attendance concerns via the MyEd app
- We would ask that parents advise us of medical appointments at the earliest possible time. There is an expectation that the child attends either before or after their appointment so that they do not miss a whole day of learning.
- Please see next slide for information of how absence affects learning.

Attendance @ Ormiston Forge

Attendance %	Academy days missed per year	Number of lessons missed per year	Attendance grading	Possible actions
100%	0	0	Outstanding	
98%	4	20	Very good	
96%	7	35	Good	Academy monitoring
95%	10	50	Almost there	Academy support
94%	11	55	Improvement needed	Academy support
90%	20	100	Concern	External support / referrals
85%	29	145	Serious concern	External support / referrals Penalty notices



Punctuality @ Ormiston Forge

- The academy day start at 8.35am and all pupils are expected to be on site and ready for line-ups at 8.33am
- When a child arrives late to the Academy, they miss an important part of the Academy day, which can include learning time, assemblies and teacher instructions.

Minutes late per day	Academy days lost per year	Number of lessons lost per year
5 minutes	3	15 lessons
10 minutes	6	30 lessons
15 minutes	9	45 lessons

CATERING SERVICES UPDATE



**you
spoke**
we
listened

"queues are
too long"

"there is often
not
much food left
to purchase"

Suggestion of other
areas to eat within the
school and other
schools had outside
'eateries'

"food is
unhealthy"

We are excited to introduce a new catering company to Forge following the Easter holidays....



Aspens Services Offering for
Ormiston Forge Academy



Following an in-depth catering services tender, Aspens Services were successfully appointed



Mobilisation will commence once the students break for Easter



This will involve staff training and new menu 'cook-days'



New Signage and additional tills for a faster service



There will be new staff recruited



There will be a three-weekly menu change



AND most importantly, prices will remain the SAME!

STREATERIES

LUNCH MENU WORLD



WEEK 1

21/04/25, 12/05/25, 02/06/25,
23/06/25, 14/07/25, 04/08/25,
25/08/25, 15/09/25, 06/10/25



MON

MAINS

Penne Bolognese Bake
with Creamy Garlic Topping

Veggie Bolognese Bake
with Creamy Garlic Topping

SIDES

**Italian Tomato &
Greens Salad**



TUE

**Caribbean Brown
Chicken Stew**

**Creamy
Rasta Pasta**

**Rice n Pea
Callaloo**



WED

**Lemon & Herb Roast
Chicken, Stuffing**
with Gravy

**Maple Butternut
Puff Pastry Slice**

**Skin On Garlic Roasties
Red Cabbage & Carrots**



THU

**Crispy Bang Bang
Chinese Chicken**

**Chinese Style
Vegetable Curry**

**Soy & Garlic Noodles
Stir Fried Asian Vegetable**



FRI

Choose from:
**Battered Fish
Sausage**

Veg Sausage
Margherita Pizza
Chicken Nuggets
Chips

**Peas, Baked Beans, Gravy
or Curry Sauce**

- ITALIAN TOMATO PASTA DAILY

- PASTA POTS -

ITALIAN TOMATO PASTA DAILY -

CLASSIC
MEATBALL MARINARA

PROTEIN LEAN
CHICKEN BOLOGNESE

CLASSIC
CARBONARA

CLASSIC
MEATBALL MARINARA

PROTEIN LEAN
CHICKEN BOLOGNESE

DELIKITCHEN

HOT GRAB & GO

Pepperoni Pizza

**BBQ
Chicken Wrap**

**Chicken Tikka Masala
Pizza Slice**

Peri Peri Chicken Wrap

**Crispy
Chicken Burger**

BIG BOWL SALAD

**CHICKEN TIKKA &
MINT YOGHURT**

**CHICKEN TIKKA &
MINT YOGHURT**

**RAMEN INSPIRED NOODLE
SALAD WITH EGG**

**RAMEN INSPIRED NOODLE
SALAD WITH EGG**

SALAD SPECIAL

DESSERTS

Homebake Selection Daily

Daily Meal Deals
Regular
Chef's Specials

DAILY
- JACKET POTATOES -
BEANS - CHEESE - TUNA MAYO
OR SIMPLY PLAIN

Freshly Made from Scratch
DAILY!

Fresh Cut Fruit
& Yogurt Pots
Available Daily

HANDCRAFTED DELI
SANDWICHES, BAGUETTES,
WRAPS, SALADS & MORE!

STREATERIES

LUNCH MENU

WORLD



WEEK 2

28/04/25, 19/05/25, 09/06/25,
30/06/25, 21/07/25, 11/08/25,
01/09/25, 22/09/25, 13/10/25



MON

MAINS

Tex Mex Smoky Beef
Enchilada with Sour Cream

Texan Smoky Bean
Fajitas with Sour Cream

SIDES

Street Corn Salsa Salad
Sweet Potato Home Fries



TUE

Korean Sticky Sesame
Chicken Noodles

Veg Bibimbap Rice Bowl
Topped with Fried Egg

Stir Fried
Asian Vegetables



WED

Lemon & Herb Roast
Chicken, Stuffing
with Gravy

Open Cheese & Potato Pie
with Crispy Garlic &
Onion Crumb

Skin on Garlic Roasties
Roasted Root Vegetables



THU

Chicken Korai
Topped with Poppadom
Crunch & Pomegranate

Curried Aloo Gobi

Yellow Rice
Coconut Green Beans



FRI

Choose from:
Battered Fish
Sausage
Veg Sausage
Margherita Pizza
Chicken Nuggets
Chips

Peas, Baked Beans, Raven
or Curry Sauce

- ITALIAN TOMATO PASTA DAILY

- PASTA POTS -

ITALIAN TOMATO PASTA DAILY -

CLASSIC
MEATBALL MARINARA

PROTEIN LEAN
CHICKEN BOLOGNESE

CLASSIC
CARBONARA

CLASSIC
MEATBALL MARINARA

PROTEIN LEAN
CHICKEN BOLOGNESE

DELI KITCHEN
HOT GRAB & GO

Pepperoni Pizza

BBQ
Chicken Wrap

Chicken Tikka Masala
Pizza Slice

Peri Peri Chicken Wrap

Crispy
Chicken Burger

BIG BOWL SALAD

CAJUN PASTA & ROASTED
SUMMER VEGETABLE

CAJUN PASTA & ROASTED
SUMMER VEGETABLE

JERK CHICKEN
& PINEAPPLE

JERK CHICKEN
& PINEAPPLE

SALAD SPECIAL

DESSERTS

Homebake Selection Daily

Daily Meal Deals
Regular
Chef's Specials

DAILY
- JACKET POTATOES -
BEANS - CHEESE - TUNA MAYO
OR SIMPLY PLAIN

Freshly Made from Scratch
DAILY!

Fresh Cut Fruit
& Yogurt Pots
Available Daily

HANDCRAFTED DELI
SANDWICHES, BAGUETTES,
WRAPS, SALADS & MORE!

STREATERIES

LUNCH MENU

WORLD



WEEK 3

05/05/25, 26/05/25, 16/06/25,
07/07/25, 28/07/25, 18/08/25,
08/09/25, 29/09/25, 20/10/25



MON

MAINS

Cheeseburger Inspired Pasta Bake

(Mince Beef, Pickles & Special Sauce)

Cheesy Garlic Mushroom & Leek Mac and Cheese

SIDES

Garlic Greens



TUE

Chicken Stifado
with Greek Pilaf Rice

Gigantes (Bean Stew)
Greek Pilaf & Crusty Bread

Greek Salad



WED

Lemon Garlic Chicken Bake
with Sage & Onion Crumb

Honey & Thyme Glazed Veggie Bangers

Skin on Garlic Roasties
Roasted Summer Vegetables



THU

Portuguese Peri Pulled Chicken
in Spiced Tomato Sauce

Portuguese Smokey Bean Empanadas

Arroz de Tomate
Crunchy Summer Salad



FRI

Choose from:
Battered Fish Sausage

Veg Sausage
Margherita Pizza
Chicken Nuggets
Chips

Peas, Baked Beans, Gravy
or Curry Sauce

- ITALIAN TOMATO PASTA DAILY

- PASTA POTS -

ITALIAN TOMATO PASTA DAILY -

CLASSIC
MEATBALL MARINARA

PROTEIN LEAN
CHICKEN BOLOGNESE

CLASSIC
CARBONARA

CLASSIC
MEATBALL MARINARA

PROTEIN LEAN
CHICKEN BOLOGNESE

DELIKITCHEN

HOT GRAB & GO

Pepperoni Pizza

BBQ
Chicken Wrap

Chicken Tikka Masala
Pizza Slice

Peri Peri Chicken Wrap

Crispy
Chicken Burger

BIG BOWL SALAD

RANCH & EGG
COBB SALAD

RANCH & EGG
COBB SALAD

MEXICAN TORTILLA
CRUNCH BOWL

MEXICAN TORTILLA
CRUNCH BOWL

SALAD SPECIAL

DESSERTS

Homebake Selection Daily

Daily Meal Deals
Regular
Chef's Specials

DAILY
- JACKET POTATOES -
BEANS - CHEESE - TUNA MAYO
OR SIMPLY PLAIN

Freshly Made from Scratch
DAILY!

Fresh Cut Fruit
& Yogurt Pots
Available Daily

HANDCRAFTED DELI
SANDWICHES, BAGUETTES,
WRAPS, SALADS & MORE!

2-item meal deal for
£2.58!

CHOOSE FROM

**Hot Mains, Pasta Pots, Noodle
Pots, Salad Pots, Sandwiches
& Hot Deli**

**And either a water OR a
home bake**



An exciting outside
POD is planned for the
summer term to ensure
there will be more
spaces for our students
for breaks and lunch
time



- An improved Sixth Form offer: *the Social Kitchen*
- A commitment to recycling and reducing plastics, introducing plates, cutlery and the space to sit down to eat
- Packed lunches now have two dedicated classrooms to enjoy their own lunches

More information will follow, watch out on our socials.....

