

**Ormiston Forge Academy  
Examinations Policy 2024/25**

**Examinations Officer:** Emma Green  
**Head of Centre:** Dr Lisa Mason  
**Next policy review date:** Autumn 2025

**Contents**

Purpose of the policy.....	4
Roles and responsibilities overview .....	4
Resilience and contingency arrangements .....	5
Cyber security .....	6
Recruitment, selection, training and support .....	6
External and internal governance arrangements .....	7
Escalation Process .....	7
Delivery of qualifications .....	7
Public liability .....	7
Conflicts of interest .....	8
Controlled assessments, coursework and non-examination assessments .....	8
Security of assessment materials .....	8
National Centre Number Register and other information requirements .....	8
Centre inspections .....	9
Policies available for inspections .....	9
Child Protection/Safeguarding Policy (Exams) .....	9
Complaints Policy (Exams) .....	9
Conflicts of interest .....	10
Conflicts of Interest Policy (Exams) .....	10
Data Protection Policy (Exams) .....	11
Equalities Policy .....	11
Contingency Plan .....	11
Internal Appeals Procedure .....	12
Malpractice Policy .....	12
Non-exam Assessment (inc controlled assessments and coursework) Policy .....	12
Whistleblowing Policy (Exams) .....	12
Word Processor Policy (Exams) .....	12
Access arrangements and reasonable adjustments .....	12
Access Arrangements Policy .....	13

Malpractice .....	13
Personal data .....	14
The exam cycle .....	16
Planning: roles and responsibilities .....	16
Secure materials .....	16
The secure room and the secure storage facility .....	16
Information sharing .....	16
Information gathering .....	17
Access arrangements .....	17
Alternative Rooming Arrangements Policy (Exams) .....	18
Internal assessment and endorsements .....	18
Invigilation .....	19
Entries: roles and responsibilities .....	20
Estimated entries .....	20
Estimated entries collection and submission procedure .....	20
Final entries .....	20
Final entries collection and submission procedure .....	20
Entry fees .....	21
Late entries .....	21
Re-sit entries .....	21
Private candidates .....	21
Candidate statements of entry .....	21
Pre-exams: roles and responsibilities .....	22
Access arrangements and reasonable adjustments .....	22
Briefing candidates .....	22
Access to Scripts, Reviews of Results and Appeals Procedures .....	22
Dispatch of exam scripts .....	23
Estimated grades .....	23
Internal assessment and endorsements .....	23
Invigilation .....	24
JCQ Centre Inspections .....	24
Seating and identifying candidates in exam rooms .....	24
Candidate Identification Procedure .....	24
Security of exam materials .....	25
Timetabling and rooming .....	25
Overnight Supervision Arrangements Policy .....	25
Alternative site arrangements .....	26
Centre consortium arrangements .....	26
Transferred candidate arrangements .....	26
Internal exams/assessments .....	27

Exam time: roles and responsibilities .....	27
Access arrangements .....	27
Candidate absence .....	27
Candidate Absence Policy .....	27
Candidate late arrival .....	28
Candidate Late Arrival Policy .....	28
Conducting exams .....	28
Dispatch of exam scripts .....	28
Exam papers and materials .....	28
Exam rooms .....	28
Food and Drink Policy (Exams) .....	29
Leaving the Examination Room Policy .....	29
Emergency Evacuation Policy (Exams) .....	29
Lockdown Policy (Exams) .....	29
Irregularities .....	30
Managing Behaviour Policy (Exams) .....	30
Malpractice .....	30
Special Consideration .....	31
Special Consideration Policy .....	31
Unauthorised items .....	31
Arrangements for unauthorised items taken into the exam room .....	31
Internal exams/assessments .....	32
Results and post-results: roles and responsibilities .....	32
Internal assessment .....	32
Managing results day(s) .....	32
Accessing results .....	32
Post-results services .....	33
Analysis of results .....	33
Certificates .....	33
Certificate Issue Procedure and Retention Policy .....	33
Exams review: roles and responsibilities .....	34
Retention of records: roles and responsibilities .....	34

## Purpose of the policy

The centre is committed to ensuring that the examinations/assessments management and administration process is run effectively and efficiently and in compliance with the published JCQ regulations and awarding body requirements.

This exam policy will ensure that:

- all aspects of the centre's exam process is documented, supporting the centre's contingency plan, and other relevant exams-related policies and procedures are signposted to
- the workforce is well informed and supported
- all centre staff involved in the process clearly understand their roles and responsibilities
- all exams and assessments are conducted according to JCQ and awarding body regulations, guidance and instructions, thus maintaining the integrity and security of the examination/assessment system at all times
- exam candidates understand the process and what is expected of them

This policy is reviewed annually to ensure ways of working in the centre are accurately reflected and that exams and assessments are conducted to current JCQ (and awarding body) regulations, instructions and guidance.

This policy will be communicated to all relevant centre staff.

## Roles and responsibilities overview

**The head of centre** is the individual who is accountable to the awarding bodies for ensuring that the centre is always compliant with the published JCQ regulations and awarding body requirements to ensure the security and integrity of the examinations/assessments. This individual must have the authority to deploy the necessary resources to ensure that the centre is always compliant in meeting those published JCQ regulations and awarding body requirements.

**The examinations officer** is the person appointed by the head of centre to act on behalf of, and be the main point of contact for, the centre in matters relating to the general administration of awarding body examinations and assessments.

**The head of centre must not normally appoint themselves as the examinations officer.** A head of centre and an examinations officer are two distinct and separate roles.

The head of centre and/or examinations officer may operate across more than one centre. In such cases the head of centre must ensure there is suitable senior leadership team support in place, so they can meet their obligations across all centres for which they are responsible. The head of centre must ensure that these arrangements are covered by their examination contingency plan. ([GR](#), section 2)

## Head of centre responsibilities

([GR 1](#))

Heads of centre must ensure that senior leadership teams and exam office personnel familiarise themselves with the entire contents of the current [General Regulations for Approved Centres](#) (GR) booklet. In particular, heads of centre must familiarise themselves with paragraphs 5.1, 5.3 and 5.4.

Heads of centre must ensure that relevant members of staff respond promptly to actions raised by the JCQ Centre Inspection Service. Failure to do so could result in the centre not receiving or being able to access question papers and other confidential assessment materials. Ultimately, awarding bodies could withdraw approval of the centre.

Heads of centre must ensure that relevant members of staff respond promptly to requests for information from awarding bodies relating to the administration and conducting of examinations/assessments.

([ICE Introduction](#)) **It is the responsibility of the head of centre to ensure that all staff comply with the instructions in the Instructions for conducting examinations document.** Failure to do so may

constitute malpractice as defined in the JCQ document [Suspected Malpractice: Policies and Procedures, 1 September 2024 to 31 August 2025](#).

(GR 5.1)

The head of centre must ensure:

- compliance with the published JCQ regulations and awarding body requirements to deliver the qualification(s)
- appropriate controls are in place which ensure accurate data is submitted to the awarding bodies by the required deadlines, e.g. entries, internally assessed marks
- all reasonable steps are taken to respond promptly to requests for information or documentation made by an awarding body or regulatory authority

### Head of centre

- Understands the contents, refers to and directs relevant centre staff to annually updated JCQ documents including:
  - [General Regulations for Approved Centres](#) (GR)
  - [Instructions for conducting examinations](#) (ICE)
  - [Access Arrangements and Reasonable Adjustments](#) (AARA)
  - [Suspected Malpractice - Policies and Procedures](#) (SMPP)
  - [Instructions for conducting coursework](#) (ICC)
  - [Instructions for conducting non-examination assessments](#) (NEA)
  - [A guide to the special consideration process](#) (SC)
- Ensures the centre has appropriate accommodation to support the size of the cohorts being taught including appropriate accommodation for candidates requiring access arrangements and/or practical assessments
- Where/if using a third party to deliver any part of a qualification (including its assessments) at the centre:
  - maintains oversight of, and responsibility for, the delivery of the qualification in accordance with JCQ regulations and awarding body requirements
  - has in place a written agreement with the third party (unless exclusions apply) to ensure there is a shared understanding of the arrangement and will manage the risk of failure by the third party to deliver the expected service
  - ensures that a copy of the written agreement is available for inspection if requested by the awarding body
- Ensures that relevant members of staff respond promptly to actions raised by the JCQ Centre Inspection Service, understanding that failure to do so could result in penalties (see **National Centre Number Register and other information requirements** section)
- Ensures that the centre promptly reports any incidents to the relevant awarding body/bodies which might compromise any aspect of assessment delivery such as a cyber-attack
- Ensures other relevant centre staff where they may be involved in the receipt and dispatch of confidential exam materials are briefed on the requirements for maintaining the integrity and confidentiality of the exam materials
- Ensures members of centre staff do not forward emails and letters from awarding body or JCQ personnel without prior consent to third parties or upload such correspondence onto social media sites and applications (including third party applications)
- Ensures members of centre staff do not advise parents/candidates to contact awarding bodies/JCQ directly nor provide them with the names, addresses and contact details (including email addresses) of examiners, moderators, external verifiers and any other awarding body examining/assessment personnel/JCQ personnel

### Resilience and contingency arrangements

(GR 3.16-19)

The centre must ensure they are familiar with the regulators' guidance on ensuring resilience in the qualifications system. Centres should consider putting in place a process for gathering evidence of candidate performance in line with the published guidance.

The centre must have an up to date written contingency plan.

The contingency plan must cover all aspects of examination/assessment administration and delivery. Senior leaders must have robust contingency arrangements in place that will minimise the risk to examination/assessment administration and delivery and any adverse impact on candidates.

The plan must cover the following scenarios:

- the head of centre, relevant senior leader(s) with oversight of examination and assessment administration, SENCo, examinations officer or any other key staff essential to the examination process being absent at a critical stage of the examination cycle
- the potential impact of other events such as flooding which could lead to all or parts of the centre becoming unavailable
- potential issues with the centre's IT systems.

As part of their contingency plan centres must identify an alternative site if examinations cannot be conducted at the registered address. Larger centres may require more than one potential alternative site or different sites for different Year Groups.

The centre must have at least one senior member of staff (senior designated contact) who is available to manage emergency requests from awarding bodies that are results related during the summer holidays. However, a number of contacts can be provided to reduce the risk of this falling on one individual throughout the summer holidays.

The centre must ensure that candidates' work is backed-up and should consider the contingency of candidates' work being backed-up on two separate devices, including one off-site back-up. Centres must implement appropriate security arrangements which protect candidates' work in the event of IT system corruption and cyber-attacks.

## Cyber security

(GR 3.20-21)

The head of centre must ensure there are procedures in place to maintain the security of user accounts by:

- providing training for authorised staff on the importance of creating strong unique passwords and keeping all account details secret
- providing training for staff on awareness of all types of social engineering/ phishing attempts
- enabling additional security settings wherever possible
- updating any passwords that may have been exposed
- setting up secure account recovery options
- reviewing and managing connected applications
- monitoring accounts and regularly reviewing account access, including removing access when no longer required
- ensuring authorised members of staff securely access awarding bodies' online systems in line with awarding body regulations regarding cyber security and the JCQ document *Guidance for centres on cyber security*  
Authorised staff will have access, where necessary, to a device which complies with awarding bodies' multi-factor authentication (MFA) requirements.
- reporting any actual or suspected compromise of an awarding body's online systems immediately to the relevant awarding body

It is the responsibility of the **head of centre** to ensure that the centre:

## Recruitment, selection, training and support

(GR 5.3)

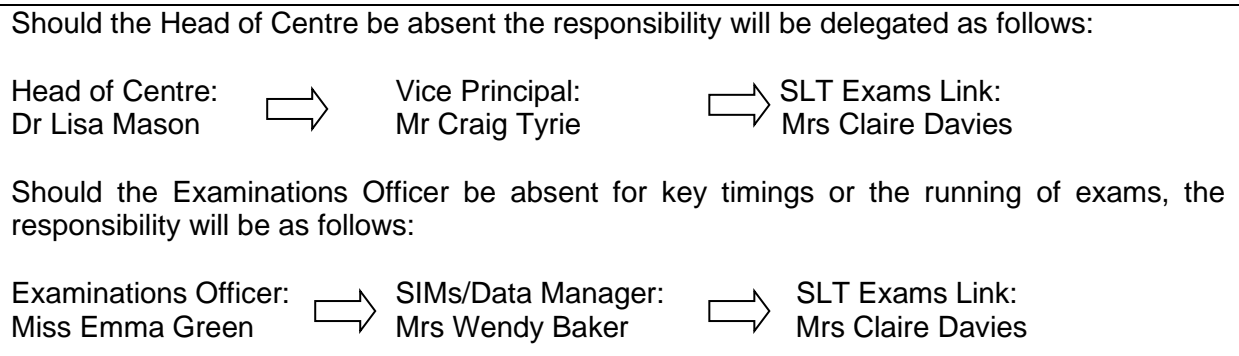
- Retains a workforce of an appropriate size and competence, including sufficient managerial and other resource, to undertake the delivery of the qualification as required by an awarding body. This includes taking reasonable steps to ensure occupational competence where this is required for the assessment of specific qualifications
- Provides fully qualified teachers to mark non-examination assessments, and/or fully qualified assessors for the verification of centre-assessed components
- Ensures that teaching staff do not use artificial intelligence (AI) as the sole means of marking candidates' work

- Enables the relevant senior leader(s), the examinations officer (EO) and the SENCo (or equivalent role) to receive appropriate training and support in order to facilitate the effective delivery of examinations and assessments within the centre, and ensure compliance with the published JCQ and awarding body regulations
- Ensures that the SENCo (or equivalent role) understands the JCQ document [Access Arrangements and Reasonable Adjustments](#) and is given sufficient time to manage the access arrangements process within the centre
- Ensures that the examinations officer understands relevant awarding body and JCQ documentation and has sufficient time to perform their role
- Ensures that any member(s) of the senior leadership team who are responsible for examination administration familiarise themselves with relevant awarding body and JCQ documentation (This will ensure the examinations officer and the SENCo are supported as well as ensuring effective centre decision making in line with the published regulations)
- Ensures that teachers understand the relevant awarding body and JCQ documentation for the qualifications they are delivering to ensure they are delivered in line with the relevant regulations

### External and Internal governance arrangements

- Has in place a written escalation process should the head of centre, or a member of the senior leadership team with oversight of examination and assessment administration, be absent

#### Escalation Process



- Has in place a member of the senior leadership team who has a good working knowledge of the examination system, will provide effective line management support and supervision of the examinations officer to ensure that the integrity and security of examinations and assessments is maintained throughout an examination series
- Ensures centre staff undertake key tasks within the exams process and meet internal deadlines set by the EO
- Can confirm to an awarding body the external governance arrangements so that the awarding body has confidence in the integrity of centre activities such as the delivery of qualifications and the conducting of examinations and assessments

### Delivery of qualifications

- Delivers qualifications, as required by the awarding body and in accordance with relevant equality legislation. This includes but is not limited to ensuring that qualifications are made available to all candidates capable of undertaking them and seeking and implementing reasonable adjustments for disabled candidates
- Enables candidates to receive sufficient and up to date practical experience, or relevant training where required by the subject concerned

### Public liability

- Complies with local health and safety rules which are in place and that the centre is adequately covered for public liability claims

### **Conflicts of interest (GR 5.3) See Policies below)**

### **Controlled assessments, coursework and non-examination assessments (GR 5.3)**

- Has in place arrangements to co-ordinate and standardise all marking of centre-assessed components and to ensure that candidates' centre-assessed work is produced, authenticated and marked, or assessed and quality assured in accordance with the awarding bodies' instructions (This applies to both internal and private candidates)
- Submits in accordance with awarding bodies' instructions, information they may reasonably require in relation to their examinations and assessments, returning all subject-specific forms by the required date

### **Security of assessment materials**

Takes all reasonable steps to maintain the integrity of the examinations/assessments, including the security of all assessment materials, by ensuring:

- the security of all assessment materials
- that assessment materials supplied to the centre by the awarding body, including pre-release materials and set assignments, and information about their contents are only shared with appropriate centre staff and candidates and are not shared outside the centre
- reporting immediately to the awarding body/bodies any potential or actual breach of examination or assessment materials

Makes arrangements to:

- receive, check and store question papers and examination material safely and securely at all times and for as long as required in accordance with the current JCQ publication *Instructions for conducting examinations*
- access, download, print (where appropriate) and store electronic assessment materials safely and securely at all times in accordance with section 4 of the current JCQ document *Instructions for conducting examinations*
- receive and issue material received from the awarding bodies to staff and candidates, and notify them of any advice and instructions relevant to the examinations and assessments
- Provides candidates access to relevant pre-release materials on, or as soon as possible after, the date specified by the awarding bodies

### **National Centre Number Register and other information requirements**

Provides contact details as follows:

- a physical address to which all examination and assessment materials will be despatched – this must be the registered address of the centre
- a landline telephone number – this must be the number of the main office/ switchboard of the centre
- a contact email address for communications – this must be the email address of the person or team responsible for the administration of examinations (Personal email addresses such as 'Yahoo', 'Hotmail' and 'Gmail' are not acceptable)
- Note: Except for WJEC, if this is a shared email account it must not be used to access awarding body secure websites
- the name of the head of centre and their email address
- senior designated contact details (this might include a personal mobile number and/or email address) (These must be the contact details of someone who can be reached in an emergency if the centre is closed over the summer and who can mobilise resources to respond to the issue)
- Responds to the National Centre Number Register annual update by the end of October every year
- informs the National Centre Number Register Team immediately (email address – [ncn@ocr.org.uk](mailto:ncn@ocr.org.uk)) if any changes occur after the National Centre Number Register annual update has taken place (This must be on centre headed stationery which can be sent as an email attachment including the signature of the head of centre)
- informs the National Centre Number Register Team (email address – [ncn@ocr.org.uk](mailto:ncn@ocr.org.uk)) of any changes to relevant contact details no later than 6 weeks prior to moving to a new address or



re-locating of the secure storage facility (This must be on centre headed stationery which can be sent as an email attachment)

- informs the National Centre Number Register Team immediately of any other changes in circumstances that could affect the centre's status
- responds, by completing the Head of Centre Declaration, to the National Centre Number Register request for confirmation that they are aware of and adhering to the latest versions of the JCQ regulations, and does so no later than the end of October every year
- responds to any other reasonable requests made by the National Centre Number Register Team - (GR 1.9) Understands that this responsibility for completing the Head of Centre declaration survey cannot be delegated to a member of the senior leadership team or the examinations officer, and acknowledges that failure to respond to the NCNR annual update, and/or the head of centre's declaration, will result in:
  - the centre status being suspended
  - the centre not being able to submit examination entries
  - the centre not receiving or being able to access question papers
  - and ultimately, awarding bodies could withdraw their approval of the centre

### Centre inspections

- Co-operates with the JCQ Centre Inspection Service, an awarding body or a regulatory authority when subject to an inspection, an investigation or an unannounced visit
- Allows all venues used for examinations and assessments, paperwork and secure storage facilities to be open to inspection
- Understands the JCQ Centre Inspector will identify themselves with a formal identity document and **must** be accompanied throughout their tour of the premises, including inspection of the centre's secure storage facility

### Policies available for inspection

Has in place the following policies for inspection that must be reviewed and updated annually:

- a written child protection/safeguarding policy in place, including Disclosure and Barring Service (DBS) clearance, which satisfies current legislative requirements

#### Child Protection/Safeguarding Policy (Exams)

Centre's policy is at the end of this document

- a complaints policy covering general complaints regarding the centre's delivery or administration of a qualification is in place and drawn to the attention of candidates and their parents/carers

#### Complaints Policy (Exams)

Centre's policy is in a separate document at the end of this policy.

### Conflicts of interest (GR 5.3)

Manages conflicts of interest by informing the awarding bodies before the published deadline for entries for each examination series of any potential conflict of interest where:

- any members of centre staff who are taking a qualification at this centre which includes internally assessed components/units\*
- any members of centre staff who are teaching and preparing members of their family (which includes step-family, foster family and similar close relationships) or close friends and their immediate family (e.g. son/daughter) for qualifications which include internally assessed components/units, and

Maintains internal records (that confirm the measures taken/protocols in place to mitigate any potential risk to the integrity of the qualifications affected) of all instances where:

- exams office staff have members of their family (which includes step-family, foster family and similar close relationships) or close friends and their immediate family (e.g. son/daughter) being entered for examinations and assessments either at this centre or other centres
- centre staff are taking qualifications at this centre which do not include internally assessed components/units\*
- centre staff are taking qualifications at other centres

Retains records of all conflicts of interest including details of the measures taken to mitigate any potential risk to the integrity of the qualifications affected (The records may be inspected by a JCQ Centre Inspector and/or awarding body staff. They might be requested in the event of concerns being reported to an awarding body. The records must be retained until the deadline for reviews of marking has passed or until any appeal, malpractice or other results enquiry has been completed, whichever is later)

\*Notes that entering members of centre staff for qualifications at their own centre must be as a last resort in cases where the member of centre staff is unable to find another centre, and ensures:

- proper protocols are in place to prevent the member of centre staff having access to examination materials prior to the examination and that other centre staff are briefed on maintaining the integrity and confidentiality of the examination materials
- during the examination series the member of centre staff is treated in the same way as any other candidate entered for that examination, does not have access to examination materials and does not receive any preferential treatment

### Conflicts of interest Policy (Exams)

- Ensures the relevant awarding bodies are informed before the published deadline for entries for each examination series of any potential conflict of interest where:
  - a member of centre staff is taking a qualification at the centre which includes internally assessed components/units (noting that being entered by the centre must be as a last resort where unable to find an alternative centre)
  - a candidate is being taught and prepared for a qualification which includes internally assessed components/units by a member of centre staff with a close relationship to the candidate
- Maintains clear records that confirm the measures taken/protocols in place to mitigate any potential risk to the integrity of the qualifications affected by the above, and where:
  - a member of exams office staff has a close relationship to a candidate being entered for exams and assessments at the centre or at another centre
  - a member of centre staff is taking a qualification at the centre which does not include internally assessed components/units (noting that being entered by the centre must be as a last resort where unable to find an alternative centre)
  - a member of centre staff is taking a qualification at another centre
- the centre has a data protection policy in place that complies with General Data Protection Regulation and Data Protection Act 2018 regulations

## Data Protection Policy (Exams)

Centre's policy is at end of this document.

Consideration may also need to be given to the centre's policy on sharing candidates' results and other exams related information with those with parental responsibility and third parties

### Legislation on sharing information

Under the principles of the General Data Protection Regulations 2018 and the Data Protection Act 2018, children and young adults can assume control over their personal information and restrict access to it from the age of 13. This suggests that candidate consent should be sought to share results or other exams-related information with a third party.

Other legislation and guidance may need to be taken into account regarding sharing information with parents, as example information from the DfE for schools regarding parental responsibility and school reports on pupil performance:

- Understanding and dealing with issues relating to parental responsibility (last updated 24 August 2023 to include)  
[www.gov.uk/government/publications/dealing-with-issues-relating-to-parental-responsibility/understanding-and-dealing-with-issues-relating-to-parental-responsibility](http://www.gov.uk/government/publications/dealing-with-issues-relating-to-parental-responsibility/understanding-and-dealing-with-issues-relating-to-parental-responsibility)
- School reports on pupil performance: guidance for headteachers  
[www.gov.uk/guidance/school-reports-on-pupil-performance-guide-for-headteachers](http://www.gov.uk/guidance/school-reports-on-pupil-performance-guide-for-headteachers)

### Publication of exam results

Refer to ICO (Information Commissioner's Office) [Schools, universities and colleges](#) information and [Exam results](#)

- the centre's equalities policy demonstrating the centre's compliance with relevant legislation is in place and details the processes followed in respect of identifying the need for, requesting and implementing access arrangements

## Equalities Policy

All exam centre staff must ensure that they meet the requirements of any equality legislation. The centre will comply with the legislation, including making reasonable adjustments to the service that they provide candidates in accordance with requirements defined by the legislation, awarding bodies, and JCQ. This is the responsibility of the Head of Centre, senior leadership team, SENCO and Examinations Officer.

- appropriate risk management processes/contingency plans are in place (that allow the senior leadership team to act immediately in the event of an emergency or where the head of centre, the examinations officer or SENCO is absent at a critical stage of the examination cycle)  
The examination contingency plan should reinforce procedures in the event of the centre being unavailable for examinations owing to an unforeseen emergency.  
All relevant centre staff must be familiar with the examination contingency plan. Consideration should be given as to how these arrangements will be communicated to candidates, parents and staff should disruption to examinations occur.

## Exam Contingency Plan

Centre's plan is in a separate policy at end of this document.

- a written internal appeals procedure is in place which covers at least appeals regarding internal assessment decisions. access to post-result services and appeals, and centre decisions relating to access arrangements and special consideration

- **Internal Appeals Procedure**

Centre's procedure which covers appeals regarding internal assessment decisions, post-result services and appeals, and centre decisions relating to access arrangements and special consideration is at the end of this document.

- a written malpractice policy which covers all qualifications delivered by the centre. The policy must detail how candidates are informed and advised to avoid committing malpractice in examinations/assessments, how suspected malpractice issues should be escalated within the centre and reported to the relevant awarding body. It must also acknowledge the use of AI (e.g. what AI is, when it may be used and how it should be acknowledged, the risks of using AI, what AI misuse is and how this will be treated as malpractice).

**Malpractice Policy (Exams)**

Centre's plan is in a separate policy at end of this document.

- a written policy regarding the management of non-examination assessments including controlled assessments and coursework. (For CCEA GCSE centres this would be a written controlled assessments policy)

**Non-examination Assessment Policy**

The non-examination assessment policy is at the end of this document.

Also refer to the JCQ document AI Use in Assessments: Protecting the Integrity of Qualifications (<http://www.jcq.org.uk/exams-office/malpractice>)

- the centre has a whistleblowing policy in place

**Whistleblowing Policy (Exams)**

Centre's policy is in a separate policy at the end of this document.

- the centre has a written policy on the use of word processors in examinations

**Word Processor Policy (Exams)**

The word processor policy is at the end of this document.

**Access arrangements and reasonable adjustments (GR 5.4)**

The head of centre/senior leadership team will:

- appoint a SENCo, or an equivalent member of staff, who will coordinate the access arrangements process within the centre and determine appropriate arrangements for candidates with learning difficulties and disabilities, candidates for whom English is an additional language, as well as those with a temporary illness or temporary injury
- ensure that learners have the correct information and advice on their selected qualification(s) in an accessible format and that the qualification(s) meet their needs (The recruitment process must include the centre assessing each potential learner and making justifiable and professional judgements about the learner's potential to complete the examinations/assessments successfully and achieve the qualification(s). The centre's

assessment must identify, where appropriate, the support that will be made available to the learner to facilitate access to examinations/assessments)

- recognise its duties towards disabled candidates, including private candidates, ensuring compliance with all aspects of the Equality Act 2010†, particularly Section 20 (7) (This must include a duty to explore and provide access to suitable courses, through the access arrangements process submit applications for reasonable adjustments and make reasonable adjustments to the service the centre provides to disabled candidates. Where the centre is under a duty to make a reasonable adjustment, the centre must not charge a disabled candidate any additional fee in relation to the adjustment or aid)

†for any legislation in a relevant jurisdiction other than England and Wales which has an equivalent purpose and effect

- ensure that the SENCo undertakes the necessary and appropriate steps to gather a picture of need and demonstrate normal way of working for a private candidate such as a distance learner or a home educated student (The centre, where required, must lead on the assessment process. The candidate must be assessed by the centre's appointed assessor. In some instances, depending on their needs, the candidate may have to be assessed away from the centre, for example at home. The centre must comply with the obligation to identify the need for, request and implement access arrangements)
- ensure that where a candidate with a learning difficulty requires an assessment of their needs, they are assessed by an appropriately qualified assessor as appointed by the head of centre (Evidence of the assessor's qualification(s) must be obtained before they assess candidates and held on file for inspection)
- have a written process in place to not only check the qualification(s) of their assessor(s) but that the correct procedures are followed as in Chapter 7 of the JCQ document Access Arrangements and Reasonable Adjustments
- assist the awarding bodies in the discharge of their duty to make reasonable adjustments by requesting access arrangements, where required, and fully support the SENCo in effectively implementing those arrangements once approved

## Access Arrangements

The SENCO will inform subject teachers of students with special educational needs and any arrangements that individual candidates will need during the course and in any assessments/exams.

A candidate's access arrangements requirement is documented by the SENCO.

Ensuring there is appropriate evidence for a candidate's access arrangement is the responsibility of the SENCO.

Submitting completed access arrangement applications to the awarding bodies is the responsibility of the SENCO/SEN administration manager/Exams Officer.

Rooming for access arrangement candidates will be arranged by the Exams Officer.

Invigilation and support for access arrangement candidates, as defined in the JCQ access arrangement regulations, will be organised by the Exams Officer/SENCO.

## Malpractice

(GR 5.11)

The centre will:

- take all reasonable steps to prevent the occurrence of any malpractice (which includes maladministration) before, during and after assessments have taken place
- inform the awarding immediately of any alleged, suspected or actual incidents of malpractice or maladministration, involving a candidate or a member of staff, by completing the appropriate documentation

- as required by an awarding body, ensures evidence of any instances of alleged or suspected malpractice (which includes maladministration) is gathered in accordance with the current JCQ document Suspected Malpractice - Policies and Procedures and provides such information and advice as the awarding body may reasonably require
- (GR 6.2) Ensures any person involved in administering, teaching or completing examinations/assessments is advised that where malpractice is suspected, or alleged, personal data about them will be provided to the awarding body (or bodies) whose examinations/assessments are involved. Personal data about them may also be shared with other awarding bodies, the qualifications regulator or professional bodies in accordance with the JCQ document Suspected Malpractice – Policies and Procedures

### Personal data (GR 6.6, 6.8)

It is the responsibility of centres to inform candidates of the processing that the centre undertakes. For example, that the centre will provide relevant personal data including name, date of birth, gender to the awarding bodies for the purpose of examining and awarding qualifications.

Materials which are submitted by candidates for assessment may include any form of written work, audio and visual materials, computer programmes and data (“Student Materials”). Awarding bodies may use the Student Materials to evaluate candidates’ performance in the relevant assessment. They may also use the Student Materials for other purposes as outlined in their privacy policies and in accordance with their terms. Candidates should be directed to the relevant awarding body’s privacy notice if they require further information about how their Student Materials may be used by the awarding body.

Where a centre or third party is in possession of any Student Materials for the purposes of candidate assessment, the Student Materials will be held on behalf of the awarding body.

### Exams officer

- Understands the contents of annually updated JCQ documents including:
  - [General Regulations for Approved Centres](#)
  - [Instructions for conducting examinations](#)
  - [Suspected Malpractice - Policies and Procedures](#)
  - [Post-Results Services \(PRS\)](#)
  - [A guide to the special consideration process](#)
- Completes/submits the National Centre Number Register annual update (administered on behalf of the JCQ member awarding bodies by OCR <https://ocr.org.uk/administration/ncn-annual-update/>) by the end of October every year to confirm the centre’s contact details or informs of any changes (and follows the process (in GR5.3) if any changes occur after the annual update has taken place)
- Is familiar with the contents of annually updated information from awarding bodies on administrative procedures, key tasks, key dates and deadlines
- Ensures key tasks are undertaken and key dates and deadlines met
- Recruits, trains and deploys a team of internal/external invigilators; appoints lead invigilators, as may be applicable to the centre and keeps a record of the content of training provided to invigilators for the required period
- Works with the SENCo (or equivalent role) to ensure invigilators supervising access arrangement candidates and those acting as a facilitator supporting access arrangement candidates fully understand the respective role and what is and what is not permissible in the exam room
- Supports the head of centre in ensuring that awarding bodies are informed (where required) of any conflict of interest declared by members of centre staff and in maintaining internal records that confirm the measures taken/protocols in place to mitigate any potential risk to the integrity of the qualifications affected before the published deadline for entries for each examination series
- Briefs other relevant centre staff where they may be involved in the receipt and dispatch of confidential materials on the requirements for maintaining the integrity and security of confidential examination/assessment materials

## Senior leaders

- Are familiar with the contents, refer to and direct relevant centre staff to annually updated JCQ documents including:
  - [General Regulations for Approved Centres](#)
  - [Instructions for conducting examinations](#)
  - [Access Arrangements and Reasonable Adjustments](#)
  - [Suspected Malpractice - Policies and Procedures](#)
  - [Instructions for conducting coursework](#)
  - [Instructions for conducting non-examination assessments](#)
  - [A guide to the special consideration process](#)
  - [Post Results Services](#)
- Ensure teaching staff undertake key tasks, as detailed in this policy, within the exams process (exam cycle) and meet internal deadlines set by the EO and SENCo (or equivalent role)
- Ensure teaching staff keep themselves updated with awarding body subject and teacher-specific information to confirm effective delivery of qualifications
- Ensure teaching staff attend relevant awarding body training and update events

## Special educational needs co-ordinator (SENCo) or equivalent role

- Understands the contents, refers to and directs relevant centre staff to annually updated JCQ documents including:
  - [Access Arrangements and Reasonable Adjustments](#)
- Leads on the access arrangements and reasonable adjustments process (referred to in this policy as 'access arrangements')
- If not the qualified access arrangements assessor, works with the person appointed, on all matters relating to assessing candidates and ensures the correct procedures are followed
- Presents when requested by a JCQ Centre Inspector, evidence of the assessor's qualification (GR 5.4)
- Ensures any applications for access arrangements or reasonable adjustments are submitted by the published deadline (The SENCo will hold on file appropriate documentary evidence to substantiate such an arrangement, which is open to inspection. For those qualifications covered by Access Arrangements Online, a JCQ Centre Inspector will sample a centre's applications)
- Ensures a file is presented which must contain for each online application the downloaded approval for the respective arrangement(s), supporting evidence of need and a signed candidate data personal consent form (This information must be readily available for inspection at the venue where the candidate is taking the examination(s))
- Ensures requests for modified papers are submitted by the published deadline
- Ensures there are appropriate resources in place at the time of examinations/assessments to meet candidates' needs, e.g. sufficient readers and scribes

## Teaching staff

- Undertake key tasks, as detailed in this policy, within the exams process and meet internal deadlines set by the EO and SENCo (or equivalent role)
- Keep updated with awarding body subject and teacher-specific information to confirm effective delivery of qualifications
- Attend relevant awarding body training and update events

## Invigilators

- Attend/undertake training (on the current regulations), update, briefing and review sessions as required
- Provide information as requested on their availability to invigilate
- Sign a confidentiality and security agreement and confirm whether they have any current maladministration/malpractice sanctions applied to them

## Reception staff

- Support the EO in the receipt and dispatch of confidential materials and follow the requirements for maintaining the integrity and security of confidential examination/assessment materials

## Site staff

- Support the EO in relevant matters relating to exam rooms and resources

## Candidates

Where applicable in this policy, the term 'candidates' refers to candidates and/or their parents/carers.

## The exam cycle

The exams management and administration process that needs to be undertaken for each **exam series** is referred to as the **exam cycle** and relevant tasks which need to be undertaken before, during and after an exam series grouped into the following stages:

- planning
- entries
- pre-exams
- exam time
- results and post-results

This policy identifies roles and responsibilities of centre staff within this cycle.

## Planning: roles and responsibilities

### Secure materials

#### Head of centre

- Ensures the centre has a secure storage facility in a room solely assigned to examinations

(ICE 3.1)

#### The secure room and the secure storage facility

##### The secure room

The secure room must only be used for the purpose of administering secure examination materials.

Access to the secure room must be restricted to two to six key holders, one of whom **must** be the exams officer. The two to six key holders **must** be permanent members of staff or members of staff who have a formal contract of employment and are subject to standard HR policies and procedures...

##### The secure storage facility

Access to the secure storage facility **must** be restricted to two to six key holders, one of whom **must** be the exams officer.

The two to six key holders **must** either be part of the exams team or the senior leadership team. A key holder from the exams team **must** be a permanent member of staff or a member of staff who has a formal contract of employment and is subject to standard HR policies and procedures.

When the secure storage facility is being accessed for the storage and preparation of secure assessment materials the door to the secure room **must** be closed.

### Information sharing

#### Head of centre

- Directs relevant centre staff to annually updated JCQ documents including [GR](#), [ICE](#), [AARA](#), [SMPP](#), [ICC](#), [NEA](#) (and the *Instructions for conducting coursework*) and [SC](#)

#### Exams officer

- Signposts relevant centre staff to JCQ documents and awarding body documentation relating to the examination/assessment process that have been updated
- Signposts relevant centre staff to JCQ information that must be provided to candidates
- As the centre administrator, approves relevant access rights for centre staff to access awarding body secure extranet sites



## Information gathering

### **Exams officer**

- Undertakes an annual information gathering exercise in preparation for each new academic year to ensure data about all qualifications being delivered is up to date and correct
- Collates all information gathered into one central point of reference
- Researches awarding body guidance to identify administrative processes, key tasks, key dates and deadlines for all relevant qualifications
- Produces an annual exams plan of key tasks and key dates to ensure all external deadlines can be effectively met; informs key centre staff of internal deadlines
- Collects information on internal exams to enable preparation for and conduct of mock examinations

### **Senior leaders**

- Respond (or ensure teaching staff respond) to requests from the EO on information gathering
- Meet the internal deadline for the return of information
- Inform the EO of any changes to information in a timely manner minimising the risk of late or other penalty fees being incurred by an awarding body
- Note the internal deadlines in the annual exams plan and directs teaching staff to meet these

## Access arrangements

### **Head of centre**

- Ensures the centre has documented processes in place relating to access arrangements and reasonable adjustments
- Ensures the SENCo or equivalent role is fully supported in effectively implementing access arrangements and reasonable adjustments once approved

### **SENCo (or equivalent role)**

- Assesses candidates (or works with the appropriately qualified assessor as appointed by the head of centre) to identify access arrangements/reasonable adjustments requirements
- Gathers **evidence** to support the need for access arrangements for a candidate
- Liaises with teaching staff to gather evidence of normal way of working for a candidate
- Determines candidate eligibility for arrangements or adjustments that are centre-delegated
- Gathers signed **Personal data consent** forms from candidates where required and ensures **Data protection confirmation(s)** by the examinations officer or SENCo are completed
- Applies for **approval** using **Access arrangements online** (AAO) via the **Centre Admin Portal** (CAP), where required or through the awarding body where qualifications sit outside the scope of AAO
- Keeps a file for each candidate for JCQ inspection purposes containing all the required documentation (if documentation is stored electronically, an e-folder must be created for each individual candidate. The candidate's e-folder must hold each of the required documents for inspection)
- Employs good practice in relation to the Equality Act 2010
- Liaises with the EO regarding exam time arrangements for access arrangement candidates
- Ensures staff appointed to facilitate access arrangements for candidates are thoroughly trained and understand the rules of the particular arrangement(s) and keeps a record of the content of training provided to facilitators for the required period
- Works with the EO to ensure invigilators and those acting as a facilitator fully understand the respective role and what is and what is not permissible in the exam room
- Liaises with the relevant member of the senior leadership team on the centre's policy on the use of word processors in examinations
- Ensures criteria for candidates granted alternative rooming arrangements is clear, meets JCQ regulations and best meets the needs of individual candidates and remaining candidates in main exam rooms

## Alternative Rooming Arrangements

The SENCO must make their decision based on:

Whether the candidate has a substantial and long term impairment which has an adverse effect

Whether it is the candidate's normal way of working within the centre

Separate invigilation reflects the candidate's normal way of working in internal school tests and mock examinations as a consequence of a long term medical condition or long term social, mental or emotional needs.

The SENCO must ensure that the proposed access arrangement does not disadvantage or advantage the candidate.

Where candidates are subject to separate invigilation within the centre, the regulations and guidance within the JCQ ICE must always be adhered to.

### Senior leaders, Teaching staff

- Support the SENCO (or equivalent role in determining and implementing appropriate access arrangements/reasonable adjustments)
- (Senior leader provides an annually reviewed and updated word processor policy, specific to the centre, which details the criteria the centre uses to award and allocate word processors for examinations)

### Internal assessment and endorsements

#### Head of centre

##### **Controlled assessments, coursework and non-examination assessments**

- Ensures that where candidates are taking non-examination assessments, teaching staff check that the tasks and approach being taken are appropriate and in line with ethical standards and the centre's safeguarding responsibilities
- Ensures awarding bodies are notified of a consortium of centres with joint teaching arrangements for qualifications (This will allow the candidates for each specification to be treated as a single group for the moderation of centre- assessed work. This is only required if two or more member centres will be entering candidates for work that is centre-assessed)
- Ensures only current assessment materials/tasks are used to assess candidates' knowledge and skills (in cases where the awarding body provides such material)
- Before submitting marks to the awarding body ensures candidates are informed of their centre assessed marks and allows a candidate to request a review of the centre's marking
- Ensures that all associated administrative tasks are completed in an accurate and timely manner, e.g. marks are correctly calculated, recorded and submitted by the published date (It is the responsibility of the centre to carefully check the marks it is submitting to an awarding body)
- Ensures submission of centre-assessed marks and moderation samples, if required by the awarding body, by the published date (It is the responsibility of the centre to ensure that moderators receive the correct samples of work to review)
- Ensures a written internal appeals procedure relating to internal assessment decisions is in place and ensures that details of this procedure are communicated, made widely available and accessible to all candidates
- Ensures a written policy regarding the management of non-examination assessments, including controlled assessments and coursework is in place
- Ensures that candidates' work is backed-up and considers the contingency of candidates' work being backed-up on two separate devices, including one off-site back-up (Implementing appropriate security arrangements which protect candidates' work in the event of IT system corruption and cyber-attacks)

## Senior leaders

- Ensure teaching staff have the necessary and appropriate knowledge, understanding, skills, and training to set tasks, conduct task taking, and to assess, mark and authenticate candidates' work (including where relevant, private candidates)
- Ensure appropriate internal moderation, standardisation and verification processes are in place
- Ensure teaching staff delivering AQA Applied General qualifications, OCR Cambridge Nationals, Entry Level Certificate or Project qualifications (and CCEA GCE unitised AS and A-level qualifications follow JCQ [Instructions for conducting coursework](#) and the specification provided by the awarding body
- Ensure teaching staff delivering relevant qualifications follow JCQ [Instructions for conducting non-examination assessments](#) and the specification provided by the awarding body
- Ensure teaching staff delivering qualifications which include (wholly or in part) units of coursework follow JCQ Instructions for conducting coursework and the specification provided by the awarding body
- For VTQs qualifications, ensure teaching staff follow appropriate instructions issued by the relevant awarding body
- Ensure teaching staff inform candidates of their centre assessed marks as a candidate may request a review of the centre's marking before marks are submitted to the awarding body

## Teaching staff

- Ensure appropriate instructions for conducting internal assessment are followed
- Ensure candidates are aware of JCQ and awarding body information for candidates on producing work that is internally assessed (coursework, non-examination assessments, social media) prior to assessments taking place
- Ensure candidates are informed of their centre assessed marks as a candidate may request a review of the centre's marking before marks are submitted to the awarding body

## Exams officer

- Identifies relevant key dates and administrative processes that need to be followed in relation to internal assessment
- Signposts teaching staff to relevant JCQ [Information for candidates documents](#) that are annually updated

## Invigilation

### Head of centre

- Ensures relevant support is provided to the EO in recruiting, training and deploying a team of invigilators
- Ensures, if contracting supply staff to act as invigilators, that such persons are competent and fully trained, understanding what is and what is not permissible (and not taking on its own an assurance from a recruitment agency, that this is the case)
- Determines if additional invigilators will be deployed in timed Art exams in addition to the subject teacher to ensure the supervision of candidates is maintained at all times
- Ensures that, wherever possible a teacher, a teaching assistant, a tutor or a senior member of centre staff who teaches the subject being examined or a Learning Support Assistant who has supported one or more candidates is not an invigilator during the examination

### Exams officer

- Recruits additional invigilators where required to effectively cover all exam periods/series' throughout the academic year
- Collects information on new recruits to identify if they have invigilated previously and if any current maladministration/malpractice sanctions are applied to them
- Provides thorough training for new invigilators on the current instructions for conducting examinations and an update for the existing invigilation team so that they are aware of any changes in a new academic year, before they are allocated to invigilate an exam
- Ensures invigilators supervising access arrangement candidates understand their role (and the role of a facilitator who may be supporting a candidate) and the rules and regulations of the access arrangement(s)

- Ensures invigilators are briefed on the access arrangement candidates in their exam room and made aware of the access arrangement(s) awarded (ensuring these candidates are identified on the seating plan) and confirms invigilators understand what is and what is not permissible
- Collects evaluation of training to inform future events

### **Entries: roles and responsibilities**

#### **Head of Centre**

- Ensures the centre's obligations as detailed in the regulations are met. (With reference to GR5.4 **Entries**)

#### Estimated entries

#### **Exams officer**

- Requests estimated or early entry information, where this may be required by awarding bodies, from senior leaders (or relevant roles) in a timely manner to ensure awarding body external deadlines for submission can be met

#### **Estimated entries collection and submission procedure**

Subject leaders will provide an estimated number of entries to the Examinations Officer to meet JCQ and awarding body deadlines.

#### **Senior leaders**

- Provide entry information requested by the EO to the internal deadline
- Inform the EO immediately of any subsequent changes to entry information

#### Final entries

#### **Head of centre**

- Ensures appropriate controls are in place which allow accurate data to be submitted to the awarding bodies, e.g. entries

#### **Exams officer**

- Requests final entry information from senior leaders (or relevant roles) in a timely manner to ensure awarding body external deadlines for submission can be met
- Informs senior leaders of subsequent deadlines for making changes to final entry information without charge
- Submits registrations, examination entries and certification claims by the deadline(s) and complies with the requirements of the specification including any terminal rules which need to be met at the point of certification
- Confirms with senior leaders final entry information that has been submitted to awarding bodies
- Ensures as far as possible that entry processes minimise the risk of entries or registrations being missed reducing the potential for late or other penalty fees being charged by awarding bodies
- Observes each awarding body's terms and conditions for the entry and withdrawal of candidates for their examinations and assessments, and observes any regulatory requirements for the qualification

#### **Final entries collection and submission procedure**

Candidates are identified for examination entry by subject staff.  
 The Examinations Officer will only accept exam entry information from Subject Leaders.  
 The academy does not accept private entries or act as an exams centre for other organisations.

Entry deadlines are circulated to Subject Leaders via email – these deadlines are usually 2 weeks before the actual exam board deadlines.

### **Senior leaders**

- Provide information requested by the EO to the internal deadline
- Inform the EO immediately, or at the very least prior to the deadlines, of any subsequent changes to final entry information, which includes
  - changes to candidate personal details
  - amendments to existing entries
  - withdrawals of existing entries
- Check final entry submission information provided by the EO and confirms information is correct

### Entry fees

The academy will pay for the entry fee for all examinations.

Late entry or amendment fees are paid by the centre/department.

Fee reimbursements are sought from candidates if they fail to sit an examination without medical evidence or evidence of other mitigating circumstances.

Re-sit fees are paid by the centre.

Candidates or departments will not be charged for changes of tier, withdrawals made through the proper procedures.

The Examinations Officer will publish the deadline for actions well in advance for each exam series.

The academy will pay for results enquiries. However, the candidate will have to pay if the centre does not uphold the enquiry and the candidate insists on pursuing it.

### Late entries

#### **Exams officer**

- Has clear entry procedures in place to minimise the risk of late entries
- Entries and amendments made after an awarding organisations deadline requires authorisation by the Subject Leader
- Charges any late or other penalty fees to departmental budgets

#### **Senior leaders**

- Minimise the risk of late entries by
  - following procedures identified by the EO in relation to making final entries on time
  - meeting internal deadlines identified by the EO for making final entries

### Re-sit entries

Re-sit decisions will be made in consultation with the candidates, subject teachers, subject leaders and senior leadership team.

### Private candidates

The academy does not accept private candidates or act as an exam centre for other organisations.

### Candidate statements of entry

#### **Exams officer**

- Provides candidates with statements of entry/timetables for checking

#### **Teaching staff**

- Ensure candidates check statements of entry and return any relevant confirmation required to the EO

## Candidates

- Confirm entry information is correct or notify the EO of any discrepancies

## Pre-exams: roles and responsibilities

### Head of Centre

- Ensures the centre's obligations as detailed in the regulations are met (with reference to GR 5.8 Candidate Information)

### Access arrangements and reasonable adjustments

#### SENCo (or equivalent role)

- Ensures appropriate arrangements, adjustments and adaptations are in place to facilitate access to exams/assessments for candidates where they are disabled within the meaning of the Equality Act (unless a temporary emergency arrangement is required at the time of an exam)
- Ensures a candidate is involved in any decisions about arrangements, adjustments and /or adaptations that may be put in place for him/her
- Ensures exam information (JCQ information for candidates documents, individual exam timetable, etc.) is adapted where this may be required for a candidate to access it
- Allocates appropriately trained centre staff to facilitate access arrangements for candidates in exams and assessments (ensuring that the facilitator appointed meets JCQ requirements and fully understands the rule of the access arrangement)
- Where relevant, ensures the necessary and appropriate steps are undertaken to gather an appropriate picture of need and demonstrate normal way of working for a private candidate (including distance learners and home educated candidates) and that the candidate is assessed by the centre's appointed assessor

### Briefing candidates

#### Exams officer

- Issues individual exam timetable information to candidates and informs candidates of any designated contingency sessions awarding bodies may identify in the event of national or significant local disruption to exams
- Prior to exams issues relevant JCQ Information for Candidates documents (coursework, non-examination assessments, on-screen tests, social media and written examinations) and awarding body privacy notices
- Where relevant, issues relevant awarding body information to candidates
- Issues centre exam information to candidates including information on:
  - exam timetable clashes
  - arriving late for an exam
  - absence or illness during exams
  - what equipment is/is not provided by the centre
  - food and drink in exam rooms
  - unauthorised items in exam rooms
  - when and how results will be issued and the staff that will be available
  - post-results services information and how the centre will deal with requests from candidates
  - when and how certificates will be issued

#### **Access to Scripts, Reviews of Results and Appeals Procedures**

Centre's procedure is in a separate document at the end of this policy.
---

## Dispatch of exam scripts

### **Exams officer**

- Identifies and confirms arrangements for the dispatch of candidate exam scripts with the DfE (STA) 'yellow label service' or the awarding body where qualifications sit outside the scope of the service

## Estimated grades

### **Senior leaders**

- Ensure teaching staff provide estimated grade information to the EO by the internal deadline (where this still may be required by the awarding body)

### **Exams officer**

- Submits estimated grade information to awarding bodies to meet the external deadline (where this may still be required by the awarding body)
- Keeps a record to track what has been sent

## Internal assessment and endorsements

### **Head of centre**

- Ensures procedures are in place for candidates to appeal internal assessment decisions and make requests for reviews of marking

### **SENCo (or equivalent role)**

- Liaises with teaching staff to implement appropriate access arrangements for candidates undertaking internal assessments and practical endorsements

### **Teaching staff**

- Support the SENCo in implementing appropriate access arrangements for candidates undertaking internal assessments and practical endorsements
- Assess and authenticate candidates' work
- Assess endorsed components
- Ensure candidates are informed of centre assessed marks prior to marks being submitted to awarding bodies

### **Senior leaders**

- Ensure teaching staff assess and authenticate candidates' work to the awarding body requirements
- Ensure teaching staff assess endorsed components according to awarding body requirements
- Ensure teaching staff provide marks for internally assessed components and grades for endorsements of qualifications to the EO to the internal deadline
- Ensure teaching staff provide required samples of work for moderation and sample recordings for monitoring to the EO to the internal deadline

### **Exams officer**

- Submits marks, endorsement grades and samples to awarding bodies/moderators/monitors to meet the external deadline
- Keeps a record to track what has been sent
- Logs moderated samples returned to the centre
- Ensures teaching staff are aware of the requirements in terms of retention and subsequent disposal of candidates' work

### **Candidates**

- Authenticate their work as required by the awarding body

## Invigilation

### **Exams officer**

- Provides an annually reviewed/updated invigilator handbook to invigilators, trains new invigilators on the current regulations on appointment and updates the existing invigilation team on any regulation changes and any changes to centre-specific arrangements
- Deploys invigilators effectively to exam rooms throughout an exam series (including the provision of a roving invigilator where a candidate and invigilator (acting as a practical assistant, prompter, reader or scribe) are accommodated on a 1:1 basis to enter the room at regular intervals in order to observe the conducting of the exam, ensure all relevant rules are being adhered to and to support the practical assistant/reader and/or scribe in maintaining the integrity of the exam)
- Allocates invigilators to exam rooms (or where supervising candidates due to a timetable clash) according to the required ratios
- Liaises with the SENCo (or equivalent role) regarding the facilitation and invigilation of access arrangement candidates

### **SENCo (or equivalent role)**

- Liaises with the EO regarding facilitation and invigilation of access arrangement candidates

### **Invigilators**

- Provide information as requested on their availability to invigilate throughout an exam series

## JCQ Centre Inspections

### **Exams officer or Senior leader**

- Will accompany the Inspector throughout a visit

### **SENCo (or equivalent role) or relevant Senior leader** (in the absence of the ALS lead/SENCo)

- Will meet with the inspector when requested to provide documentary evidence regarding access arrangement candidates and address any questions the inspector may raise
- Ensures that information is readily available for inspection at the venue where the candidate is taking the exam(s)

## Seating and identifying candidates in exam rooms

### **Exams officer**

- Ensures a procedure is in place to verify the identity of all candidates

#### **Candidate Identification Procedure**

Pastoral staff/senior leadership team may be present at the start of the exam to assist with the identification of candidates. Any staff present must be in accordance with the rules defined by JCQ concerning who is allowed and what they can do.
--

- Ensures invigilators are aware of the procedure
- Provides seating plans for exam rooms according to JCQ and awarding body requirements (and ensures candidates with access arrangements are identified on the seating plan and invigilators are informed of those candidates with access arrangements and made aware of the access arrangement(s) awarded)

### **Invigilators**

- Follow the procedure for verifying candidate identity provided by the EO
- Seat candidates in exam rooms as instructed by the EO/on the seating plan



## Security of exam materials

### **Exams officer**

- Confirms appropriate arrangements are in place to ensure that confidential materials are only handed over to those authorised by the head of centre
- Ensures access to the secure room is restricted and staff approved by the head of centre are accompanied by a keyholder at all times.
- Has a process in place to demonstrate the receipt, secure movement and secure storage of confidential exam materials within the centre
- Ensures a log is kept at the initial point of delivery recording confidential materials received and signed for by authorised staff within the centre and that appropriate arrangements are in place for confidential materials to be immediately transferred to the secure storage facility until they can be removed from the dispatch packaging and checked in the secure room before being returned to the secure storage facility in timetable order
- Carefully checks question paper packets when they are removed from the dispatch packing and keeps a log of the check
- Ensures the secure storage facility contains only current and live confidential material (ensuring that past examination question papers, internal tests and mock examinations are not kept in the centre's secure storage facility)
- Ensures that examination stationery, e.g. answer booklets and formula booklets are stored in the secure room (attempting to store this material in the secure storage facility, when sufficient space allows)
- Ensures the integrity and security of any electronic question paper is maintained during the downloading, printing and collating process (ensuring printing is carried out in a secure environment at the centre to prevent unauthorised personnel accessing live assessment materials and ensuring only authorised members of centre staff have access to electronic question paper materials)

At least two and no more than six members of centre staff should be authorised to handle secure electronic materials, one of whom must be the exams officer. Other members of centre staff may assist with printing and collation provided they are under supervision.

### **Reception staff**

- Follow the process to log confidential materials delivered to/received by the centre to the point materials are issued to authorised staff for transferal to the secure storage facility

### **Teaching staff**

- Adhere to the process to record the secure movement of confidential materials taken from or returned to secure storage throughout the time the material is confidential

## Timetabling and rooming

### **Exams officer**

- Produces a master centre exam timetable for each exam series
- Identifies and resolves candidate exam timetable clashes according to the regulations (only applying overnight supervision arrangements as a last resort, once all other options have been exhausted and according to the centre's policy)

### **Overnight Supervision Arrangements**

- Overnight supervision arrangements should only be applied as a last resort and once all other options have been exhausted.
- Candidates may at the centre's discretion, be allowed to take an examination the following morning, including Saturday's. Candidates are not allowed to take examinations on an earlier day that is scheduled on the timetable.
- The overnight supervision arrangements must ensure that the candidate does not have advance warning of the content of the examination deferred until the following morning. This means the candidate must not meet or communicate with anyone who may have knowledge of the content. This includes any form of electronic communication/storage device eg telephone (landline and mobile), email, internet and

social media. It also extends to the television and radio, which could report key details of the day's examinations.

- The JCQ Overnight Supervision and Overnight Supervision Declaration forms must be completed before the overnight supervision is to commence. The JCQ Overnight Supervision form is completed online using the Centre Admin Portal (CAP). The JCQ Overnight Supervision Declaration form is downloaded from the Centre Admin Portal (CAP) for signing by the candidate, the supervisor and the head of centre.

- Identifies exam rooms and specialist equipment requirements
- Allocates invigilators to exam rooms (or where supervising candidates due to an exam timetable clash) according to required ratios
- Liaises with site staff to ensure exam rooms are set up according to JCQ and awarding body requirements
- Liaises with the SENCo (or equivalent role) regarding rooming of access arrangement candidates

#### **SEnCo (or equivalent role)**

- Liaises with the EO regarding rooming of access arrangement candidates
- Liaises with other relevant centre staff to ensure appropriate arrangements, adjustments and adaptations are in place to facilitate access for disabled candidates to exams

#### **Site staff**

- Liaise with the EO to ensure exam rooms are set up according to JCQ and awarding body requirements

#### Alternative site arrangements

##### **Exams officer**

- (Where/if applicable to the centre) Ensures question papers will only be taken to an alternative site where the published criteria for an alternative site arrangement has been met
- Will inform the JCQ Centre Inspection Service to timescale by submitting a JCQ Alternative Site form online using CAP (or through the awarding body where a qualification may sit outside the scope of CAP) of any alternative sites that will be used to conduct timetabled examination components of the qualifications listed in the JCQ regulations

#### Centre consortium arrangements

##### **Exams officer**

- (Where/if applicable to the centre) Processes applications for Centre Consortium arrangements using CAP to the awarding body deadline (or through the awarding body where a qualification may sit outside the scope of CAP)

##### **Senior leaders**

- (Where/if applicable to the centre) Inform the EO of any joint teaching arrangements in place and where the centre is acting as the consortium co-ordinator

#### Transferred candidate arrangements

##### **Exams officer**

- (Where/if applicable to the centre) Liaises with the host or entering centre, as required
- Processes requests for Transferred Candidate arrangements using CAP to the awarding body deadline (or through the awarding body where a qualification may sit outside the scope of CAP)
- Where relevant (for an internal candidate) informs the candidate of the arrangements that have been made for their transferred candidate arrangement

## Internal exams/assessments

### **Exams officer**

- Prepares for the conduct of internal exams/assessments under external conditions (where applicable to the centre)
- Provides a centre exam timetable of subjects and rooms
- Provides seating plans for exam rooms
- Requests internal exam papers from teaching staff
- Arranges invigilation (where applicable to the centre)

### **ALS lead/SENCo**

- Liaises with teaching staff to make appropriate arrangements for access arrangement candidates

### **Teaching staff**

- Provide exam papers and materials to the EO
- Support the SENCo in making appropriate arrangements for access arrangement candidates

## **Exam time: roles and responsibilities**

### Head of Centre

- Ensures the centre's obligations as detailed in the regulations are met (With reference to GR 5.9 Conducting examinations and assessments)

## Access arrangements

### **Exams officer**

- Provides cover sheets for access arrangement candidates' scripts where required for particular arrangements
- Has a process in place to deal with emergency/temporary access arrangements as they arise at the time of exams
- Liaises with the SENCo to apply through AAO where required or through the awarding body where qualifications sit outside the scope of AAO

## Candidate absence

### **Candidate Absence**

The attendance/pastoral team will attempt to contact any candidate who is not present at the start of an examination and deal with them in accordance with JCQ guidelines.

The centre candidate absence policy is in a separate document at the end of this policy.

### **Invigilators**

- Are informed of the policy/process for dealing with absent candidates through training
- Ensure that confirmed absent candidates are clearly marked as such on the attendance register and seating plan

### **Candidates**

- Are re-charged relevant entry fees for unauthorised absence from exams

## Candidate behaviour

See *Irregularities* below.

## Candidate belongings

See *Unauthorised items* below.

## Candidate late arrival

## Exams officer

- Ensures that candidates who arrive very late for an exam are reported to the awarding body by submitting a report on candidate admitted very late to examination room using CAP to timescale
- Warns candidates that their script may not be accepted by the awarding body

## Invigilators

- Are informed of the policy/process for dealing with late/very late arrival candidates through training
- Ensure that relevant information is recorded on the exam room incident log

### Candidate Late Arrival Policy

If candidates are late they must report to the main reception where they will be collected and escorted to their exam room.

If candidates arrive late to an exam it is at the academy's discretion whether they are allowed the full time for the exam. This is dependent on the reason given for the lateness, the logistics of the exam timetable on the day, rooming and the staff available to supervise the late candidate.

## Conducting exams

### Head of centre

- Ensures venues used for conducting exams meet the requirements of JCQ and awarding bodies

### Exams officer

- Ensures exams are conducted according to JCQ and awarding body instructions
- Uses an *exam day checklist* to ensure each exam session is fully prepared for, unplanned events can be dealt with and associated follow-up is completed

## Dispatch of exam scripts

### Exams officer

- Dispatches scripts as instructed by JCQ and awarding bodies
- Keeps appropriate records to track dispatch

## Exam papers and materials

### Exams officer

- Organises exam question papers and associated confidential resources in date order in the secure storage facility
- Attaches erratum notices received to relevant sealed question paper packets
- Collates attendance registers and examiner details in date order
- Regularly checks mail or email inbox for updates from awarding bodies
- In order to avoid potential breaches of security, ensures care is taken to ensure the correct question paper packets are opened by ensuring a member of centre staff, additional to the person removing the papers from secure storage, e.g. an invigilator, checks the day, date, time, subject, unit/component and tier of entry, if appropriate, immediately before a question paper packet is opened
- Ensures this second pair of eyes check is recorded
- Where allowed by the awarding body, only releases exam papers and materials to teaching departments for teaching and learning purposes after the published finishing time of the exam, or until any timetable clash candidates have completed the exam

## Exam rooms

### Head of centre

- Ensures that internal tests, mock exams, revision or coaching sessions are not conducted in a room 'designated' as an exam room

- Ensures that when a room is 'designated' as an exam room it is not used for any purpose other than conducting external exams
- Ensures only approved centre staff (who have not taught the subject being examined) are present in exam rooms to perform permitted tasks
- Ensures the centre's policy relating to food and drink that may be allowed in exam rooms is clearly communicated to candidates
- Ensures the centre's policy on candidates leaving the exam room temporarily is clearly communicated to candidates

### **Food and Drink (Exams)**

Food, juice and fizzy drinks are not allowed in the examination room. Only bottles of water are allowed to be kept on exam desks throughout the duration of the exam. Bottles need to be free from packaging and all labels removed before the start of the examination.

### **Leaving the Examination Room**

- Candidates are expected to stay in the exam room for the duration of the exam.
- Candidates may leave the examination room for a genuine purpose requiring an immediate return to the examination room, in which case a member of staff must accompany them. This is usually the invigilator or Examinations Officer. This member of staff must not be the candidate's subject teacher or subject expert for the examination in question. The time the candidate leaves the examination room and returns must be recorded. These candidates may be allowed extra time at the discretion of the centre to compensate for their temporary absence.

### **Exams officer**

- Ensures exam rooms are set up and conducted as required in the regulations
- Provides invigilators with appropriate resources to effectively conduct exams
- Briefs invigilators on exams to be conducted on a session by session basis (including the arrangements in place for any transferred candidates and access arrangement candidates)
- Ensures sole invigilators have an appropriate means of summoning assistance (if this is a mobile phone, instructs the invigilator that the mobile phone is only allowed to be used for this specific purpose and that it must be kept on silent mode)
- Ensures invigilators understand they must be vigilant and remain aware of incidents or emerging situations, looking out for malpractice or candidates who may be in distress, recording any incidents or issues on the exam room incident log
- Ensures invigilators understand how to deal with candidates who may need to leave the exam room temporarily and how this should be recorded on the exam room incident log
- Provides authorised exam materials which candidates are not expected to provide themselves
- Ensures invigilators and candidates are aware of the emergency evacuation procedure
- Ensures invigilators are aware of arrangements in place for a candidate with a disability who may need assistance if an exam room is evacuated

### **Senior leaders**

- Ensure a documented emergency evacuation procedure for exam rooms is in place
- Ensure arrangements are in place for a candidate with a disability who may need assistance if an exam room is evacuated
- Ensure a procedure is in place in case of an emergency evacuation (lockdown)

### **Emergency Evacuation Policy (Exams)**

The Emergency Evacuation Policy is at the end of this document.

### **Lockdown Policy (Exams)**

Centre's policy is in a separate policy at end of this document.

## Site staff

- Ensure exam rooms are available and set up as requested by the EO
- Ensure grounds or centre maintenance work does not disturb exam candidates in exam rooms
- Ensure fire alarm testing does not take place during exam sessions

## Invigilators

- Conduct exams in every exam room according to JCQ Instructions for conducting examinations and/or awarding body requirements and as instructed by the centre in training/update and briefing sessions

## Candidates

- Are required to follow the instructions given to them in exam rooms by authorised centre staff and invigilators
- Are required to remain in the exam room for the full duration of the exam

## Irregularities

### Head of centre

- Ensures (as required by an awarding body) any cases of alleged, suspected or actual incidents of malpractice or maladministration before, during or after examinations/assessments (by centre staff, candidates, invigilators) are investigated and reported to the awarding body **immediately**, by completing the appropriate documentation

### Managing Behaviour (Exams)

- Disruptive candidates are dealt with in accordance with JCQ guidelines. Where a candidate is being disruptive, the invigilator must warn the candidate that he/she may be removed from the examination room. The candidate must also be warned that the awarding body will be informed and may decide to penalise them, which could include disqualification.
- The invigilator must record any incidents that happen within the examination room on the incident logsheet and report any incidents to the Examinations Officer at the earliest they can.
- Senior leaders, KS4 and KS5 pastoral staff ensure support is provided for the Examinations Officer and invigilators when dealing with disruptive candidates in exam rooms.

The Managing Behaviour Policy for exams is in a separate document at the end of this policy.

### Malpractice (Exams)

The Head of Centre in consultation with the senior leadership team and the Examinations Officer are responsible for investigating suspected malpractice.

#### Student Malpractice

The Head of Centre will:

- Report to the appropriate awarding body at the earliest opportunity all suspicions or actual incidents of malpractice.
- Supervise all investigations resulting from an allegation of malpractice
- Ensure that where an investigation has been delegated to a member of staff, the member of staff chosen is independent to the subject involved.
- Respond speedily and openly to all requests for an investigation into an allegation of any malpractice.

#### Staff Maladministration

- Maladministration is essentially any activity or practice which results in non-compliance with the examination body administrative regulations and requirements.
- The academy will carry out an initial investigation where it is suspected or a case of actual maladministration has taken place.
- If after the initial investigation it is felt that maladministration is suspected then the awarding body must be notified immediately.

- Where malpractice is established the disciplinary policy of the academy will be enforced and the awarding body notified accordingly.

A Malpractice and Maladministration Policy (Exams) is in a separate document at the end of this policy.

### Senior leaders

- Ensure support is provided for the EO and invigilators when dealing with disruptive candidates in exam rooms
- Ensure that internal disciplinary procedures relating to candidate behaviour are instigated, when appropriate

### Exams officer

- Provides an exam room incident log in all exam rooms for recording any incidents or irregularities
- Actions any required follow-up and reports to awarding bodies as soon as practically possible after the exam has taken place

### Invigilators

- Record any incidents or irregularities on the exam room incident log (for example, late/very late arrival, candidate or centre staff suspected malpractice, candidate illness or needing to leave the exam room temporarily, disruption or disturbance in the exam room, emergency evacuation)

### Special consideration

#### Senior leaders

- Support eligible applications for special consideration by signing appropriate evidence

#### Exams officer

- Processes eligible applications for special consideration to awarding bodies
- Gathers evidence which may need to be provided by other staff in centre or candidates
- Submits requests to awarding bodies to the external deadline

#### Special Consideration

- Should a candidate be unable to attend an exam because of illness, suffer bereavement or other trauma, be ill or otherwise disadvantaged or disturbed during an exam, then it is the candidate's responsibility to alert the academy to that effect.
- The candidate must support any special consideration claim with appropriate evidence within 2 days of the exam eg medical note from GP/hospital
- The Examinations Officer will make a special consideration application to the relevant awarding body before the deadline set by JCQ.

The centres Special Consideration Policy is at the end of this document.

### Candidates

- Provide appropriate evidence to support special consideration applications, where required

### Unauthorised items

#### Arrangements for unauthorised items taken into the exam room

In an exam room candidates must not have access to items other than those clearly allowed in the instructions on the question paper, the stationery list, or the specification for that subject. This is particularly true of mobile phones, watches and other electronic communication or storage devices with text or digital facilities. Any precluded items must not be taken into an exam room. Students can leave their belongings in a nearby classroom when sitting exams in the main sports hall. This room is locked while the exam is in progress. If students accidentally take any unauthorised items into the sports hall, the exam invigilators will take the item and put it in an envelope labelled with the students name and keep it at the front of the exam room until the exam has ended.

If students are in smaller separate rooms for their exams they can take in their belongings to the room but have to leave them at the front – any phone watches etc have to be left on a desk, switched off, at the front in an envelope.

## **Invigilators**

- Are informed of the arrangements through training

## Internal exams/assessments

### **Exams officer**

- Briefs invigilators on conducting internal exams
- Returns candidate scripts to teaching staff for marking

### **Invigilators**

- Conduct internal exams as briefed by the EO

## **Results and post-results: roles and responsibilities**

### **Head of centre**

- Ensures the centre's obligations as detailed in the regulations are met. (With reference to GR5.12 **Results**, 5.13 **Post-results services and appeals**, 5.14 **Certificates**)

## Internal assessment

### **Senior leaders**

- Ensures teaching staff keep candidates' work, whether part of the moderation sample or not, secure and for the required period stated by JCQ and awarding bodies
- Ensures work is returned to candidates after the retention period or disposed of according to the requirements

## Managing results day(s)

### **Senior leaders**

- Identify centre staff who will be involved in the main summer results day(s) and their role
- Ensure senior members of staff are accessible to candidates immediately after the publication of results so that results may be discussed and decisions made on the submission of any requests for post-results services and ensure candidates are informed of the periods during which centre staff will be available so that they may plan accordingly

### **Exams officer**

- Works with senior leaders to ensure procedures for managing the main summer results day(s) (a results day programme) are in place

### **Site staff**

- Ensure the centre is open and accessible to centre staff and candidates, as required for the collection of results

## Accessing results

### **Head of centre**

- Ensures results are kept entirely confidential and restricted to key members of staff until the official dates and times of release of results to candidates
- Understands that it is not permitted to withhold provisional results from candidates under any circumstances

### **Exams officer**

- Informs candidates in advance of when and how results will be released to them for each exam series
- Accesses results from awarding bodies under restricted release of results, where this is provided by the awarding body



- Resolves any missing or incomplete results with awarding bodies
- Issues statements of results to candidates on issue of results date
- Provides summaries of results for relevant centre staff on issue of results date

### Post-results services

#### **Head of centre**

- Ensures an **internal appeals procedure** is available where candidates disagree with any centre decision not to support a clerical re-check, a review of marking, a review of moderation or an appeal
- Ensures that senior members of centre staff are available immediately after the publication of results
- Understands that if the centre has concerns about one of its component/subject cohorts, then requests for reviews of marking should be submitted for all candidates believed to be affected (candidate consent is required as marks and subject grades may be lowered, confirmed or raised)

#### **Exams officer**

- Provides information to candidates and staff on the services provided by awarding bodies and the fees charged (see also above **Briefing candidates** and **Access to Scripts, Reviews of Results and Appeals Procedures**)
- Publishes internal deadlines for requesting the services to ensure the external deadlines can be effectively met
- Provides a process to record requests for services and to collect candidate informed consent (**after** the publication of results) and fees where relevant
- Submits requests to awarding bodies to meet the external deadline for the particular service
- Tracks requests to conclusion and informs candidates and relevant centre staff of outcomes
- Updates centre results information, where applicable

#### **Teaching staff**

- Meet internal deadlines to request the services and gain relevant candidate informed consent
- Identify the budget to which fees should be charged

#### **Candidates**

- Meet internal deadlines to request the services
- Provide informed consent and fees, where relevant

### Analysis of results

#### **Data Manager**

- Provides analysis of results to appropriate centre staff
- Provides results information to external organisations where required
- Undertakes the DfE School and College Checking Exercises (where applicable to the centre)

### Certificates

Certificates are provided to centres by awarding bodies after results have been confirmed.

#### **Certificate Issue Procedure and Retention**

- |  |
|--|
| <ul style="list-style-type: none"> <li>• Certificates will be available for collection from the centre from the beginning of December following that examination series.</li> <li>• Certificates cannot be posted home.</li> <li>• Certificates can be collected against a signature by the candidate in person, by a third party with written permission.</li> <li>• The academy securely retains certificates for 10 years after the students leaving date. After this date, the certificates are securely destroyed.</li> <li>• A new certificate will not be issued by an awarding organisation. A transcript of results may be issued if a candidate agrees to pay the costs incurred.</li> </ul> |
|--|

## **Candidates**

- May arrange for certificates to be collected on their behalf by providing the EO with written or email permission/authorisation; authorised persons must provide ID evidence on collection of certificates

## **Exams review: roles and responsibilities**

### **Exams officer**

- Provides SLT with an overview of the exam year, highlighting what went well and what could be developed/improved in terms of exams management and administrative processes within the stages of the exam cycle
- Collects and evaluates feedback from staff, candidates and invigilators to inform an exams review

### **Senior leaders**

- Work with the EO to produce a plan to action any required improvements identified in the review

## **Retention of records: roles and responsibilities**

### **Exams officer**

- Keeps records as required by JCQ and awarding bodies for the required period
- Keeps records as required by the centre's records management policy