

A Level Psychology

Transition Pack



AQA A Level Psychology

Transition Pack

Welcome!

Welcome to the Social Sciences Department and the A Level Psychology course. The challenges of A Level are a significant step up from GCSE and this can seem daunting at first. This is nothing to worry about and you will receive plenty of support from September. In the meantime, it is recommended that you use the next few months to prepare for this new course.

The pack includes an overview of what you will study during the first year of the course, should you join it, together with a series of introductory tasks for you to work through. The tasks are designed to help you get to grips with some of the key terms you will need to know, as well as concepts you will learn about as a student of A Level Psychology.

To access the Psychology A Level course in September, you will need to complete the tasks set out in this pack and also meet the course entry requirements, which can be found in the sixth form course listing document.

The following website is particularly useful for researching the topics you will be studying in psychology - <https://www.simplypsychology.org/a-level-psychology.html>

A Level Psychology

In order to excel in A Level Psychology, and assist your development in preparation for your next steps after sixth form, you must actively engage in independent study in addition to your timetabled lessons. The ability to conduct independent research is a skill that will undoubtedly support your university applications and/or future job applications.

Specification

At Forge you are studying AQA A Level Psychology, the full specification for which can be found here:

<https://filestore.aqa.org.uk/resources/psychology/specifications/AQA-7181-7182-SP-2015.PDF>

It is recommended that you refer to this specification regularly as your independent study should involve you reading ahead of topics we have not yet covered in lessons. Your psychology teachers will provide you with specific guidance of what you could focus on whilst completing your own research.

Revision techniques

You should avoid merely reading over your notes continuously. Instead, you should summarise your 'core notes' to make them more concise and organised. Your psychology teachers will provide specific guidance on this but the most common successful revision strategies involve:

- Creating a revision timetable which focuses on specific skills for a topic.
- Producing your own revision cards and/or mind maps for the topic.
- Designing your own fact sheet or memory board for the topic.
- Creating sample answers to exam questions.
- Answering scenario based questions.

Question Bank

The exam board provides a question bank, which can be accessed here:

<https://www.aqa.org.uk/subjects/psychology/as-and-a-level/psychology-7181-7182/assessment-resources>

You can use the question bank to find questions on key topics you want to test yourself on or revise and then use the accompanying mark scheme to mark your answers.

YouTube

YouTube contains many clips and podcasts on topics relevant to your psychology A level. For instance, it's recommended you subscribe to psych boost on YouTube where you will find good summaries of the topics we cover in psychology.

MOOCs

MOOCs – Massive Open Online Courses- are online courses that provide videos, reading lists and activities. You often don't need to formally complete the course and many are free. There are a number of Psychology related ones available at the sites listed on the next page. Whilst these are not directly linked to your A Level course, delving into them will certainly develop your knowledge and understanding of Psychology.

- FutureLearn – www.futurelearn.com
- EdX – www.edx.org
- Coursera – www.coursera.org

The Media

One of the best things you can do as a psychology student is to explore the media for psychology related articles and stories. Let your psychology teachers know of any clips or articles you find and we can discuss this in class. For example, the infant's behaviour shown in this clip <https://www.youtube.com/watch?v=0laNR8YGdow> can easily be explained during our lessons on attachment.

Reading list- Useful Websites

It's recommended that you regularly use the following websites:

<https://www.tutor2u.net/psychology> - a useful site featuring lots of articles and revision notes relevant to your A level. You can also subscribe to them on YouTube.

<https://www.simplypsychology.org/a-level-psychology.html> - a very useful website which summaries the topics we study in psychology.

<https://www.revisely.co.uk/alevel/psychology/aqa/> - some very useful video tutorials which will help with revision.

Reading list- Text Books

A good summary of the Year One content (reference copies available in the Psychology Department) -

https://www.amazon.co.uk/AQA-Psychology-Level-Year-AS/dp/190868240X/ref=sr_1_1?crid=3HV7KT1YSAWB0&keywords=aqa+a+level+psychology&qid=1563281094&s=gateway&sprefix=AQA+A+Level+Psyc%2Caps%2C143&sr=8-1

A good summary of the Year Two content (reference copies available in the Psychology Department) -

https://www.amazon.co.uk/AQA-Psychology-Level-Year-Student/dp/1908682418/ref=sr_1_2?crid=3HV7KT1YSAWB0&keywords=aqa+a+level+psychology&qid=1563281145&s=gateway&sprefix=AQA+A+Level+Psyc%2Caps%2C143&sr=8-2

A detailed overview of the Year One content (reference copies available in the Psychology Department) -

https://www.amazon.co.uk/AQA-level-Psychology-Book-1/dp/1471834883/ref=sr_1_8?crid=3HV7KT1YSAWB0&keywords=aqa+a+level+psychology&qid=1563281145&s=gateway&sprefix=AQA+A+Level+Psyc%2Caps%2C143&sr=8-8

A detailed overview of the Year Two content (reference copies available in the Psychology Department) -

https://www.amazon.co.uk/AQA-level-Psychology-Book-2/dp/1471835375/ref=pd_sbs_14_1/257-5186446-0243260?encoding=UTF8&pd_rd_i=1471835375&pd_rd_r=b5c6b5ee-a7c7-1e9-96fe-7f0482591490&pd_rd_w=idcep&pd_rd_wg=1R1EZ&pf_rd_p=18edf98b-139a-41ee-bb40-d725dd59d1d3&pf_rd_r=AHZBZPDCSCVVYYSZGY2A&psc=1&refRID=AHZBZPDCSCVVYYSZGY2A

General revision for A Level Psychology (reference copies available in the Psychology Department) -

https://www.amazon.co.uk/Level-Psychology-Complete-Revision-Practice/dp/1782943307/ref=sr_1_3?crid=3HV7KT1YSAWB0&keywords=aqa+a+level+psychology&qid=1563281145&s=gateway&sprefix=AQA+A+Level+Psyc%2Caps%2C143&sr=8-3

Develop your interest of Psychology further

There are many documentaries and movies which highlight many of the sociological issues we will be learning about during our lessons. Some notable examples include:

A Beautiful Mind.

Girl Interrupted.

Inception.

K-Pax.

A Level Psychology: Preparatory Tasks

Please complete each of the tasks set out in the rest of this transition pack and bring your answers and/or findings with you to the first lesson in September 2020 if you join the course.

Submission: should be a comprehensive written or typed set of answers. If you use other websites to get answers please do not copy from them create a list of all websites used and hand this in with your work. If you complete your work on goggle docs please share with ricky.dhatt@oatfroge.co.uk - with editing rights so that work can be marked.

Psychology is the scientific study of the mind and behaviour. At the end of the two years you will sit THREE papers. They will include the following topics:

<u>Paper 1</u>	<u>Paper 2</u>	<u>Paper 3</u>
<ul style="list-style-type: none">• Social influence• Attachment• Memory• Psychopathology	<ul style="list-style-type: none">• Approaches in Psychology• Biopsychology• Research Methods	<ul style="list-style-type: none">• Issues and Debates• Relationships• Schizophrenia• Addiction

<https://www.simplypsychology.org/>

This website is a very good starting point and I suggest that you read around the different topics. You can also use this website to help you complete the following tasks:

1. SOCIAL INFLUENCE:

- *What are the three definitions of conformity? Can you give an example of each one?*
- *Explain and evaluate the key studies in social influence: Asch, Milgram & Zimbardo*
- *Explain how an individual can resist social influence*

2. MEMORY:

- *Define coding, capacity and duration*
- *Explain the Multi - store model of memory and the Working memory model*
- *Evaluate these models*
- *What are the different types of forgetting? Can you use a key study to explain each type?*
- *What are the factors that have an effect on the accuracy of eyewitness testimony?*

3. **PSYCHOPATHOLOGY:**

- Explain the difference between behavioural, emotional and cognitive characteristics
- What are the FOUR definitions of abnormality? Can you give an example of each one?
- Explain the different ways in which depression, phobias and OCD can be explained and treated

4. **APPROACHES IN PSYCHOLOGY:**

- Pick THREE approaches that interest you the most and explain them in thorough detail with the use of key studies, strengths and weaknesses

5. **ISSUES AND DEBATES:**

- Can you identify the issues in psychology and the debates?
- Explain the concept of TWO issues and TWO debates of your choice

You can complete the above tasks in any way you prefer ie, brainstorm, revision cards, essays etc.

Memory Tasks

1. Watch the video:

<https://www.youtube.com/watch?v=KkaXNvzE4pk>

2. Research and make notes on patient HM. What happened to him, how did this affect him, and what does it tell us about memory?

3. Carry out a short memory experiment.

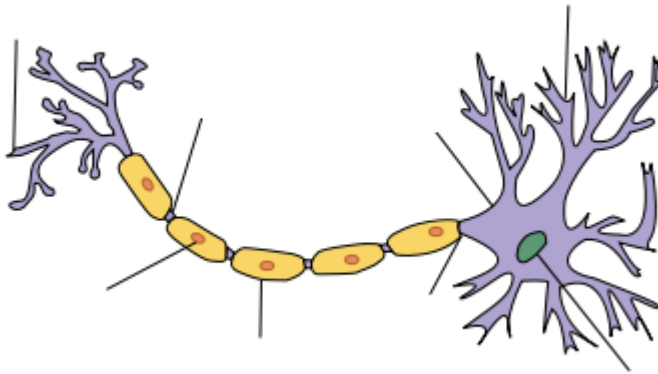
- Write a list of 20 nouns, such as 'apple', 'table'. Make sure these are random words which are not connected to each other.
- Write out another list of 20 nouns, but this time with 5 each in the categories of animals, stationary, clothes, and vehicles.
- Ask someone you know (over 16 years old) if they will do your experiment. You need to read out the lists to them one at a time, and after each one, they should write down the words they can remember.
- Which list did they remember more words from? Why do you think this is?

4. In the experiment you have just done, what was the independent variable? What was the dependent variable? What variables were kept the same (control variables)?

Biopsychology Tasks

Biopsychology is the study of the brain, and how it affects behaviour. You will have covered some of the basic information in GCSE Science.

1. Label the diagram below:



1. Explain what the following do:

Sensory neurons:

Motor neurons:

Relay neurons:

1. Research what neurotransmitters are, and give 3 examples.