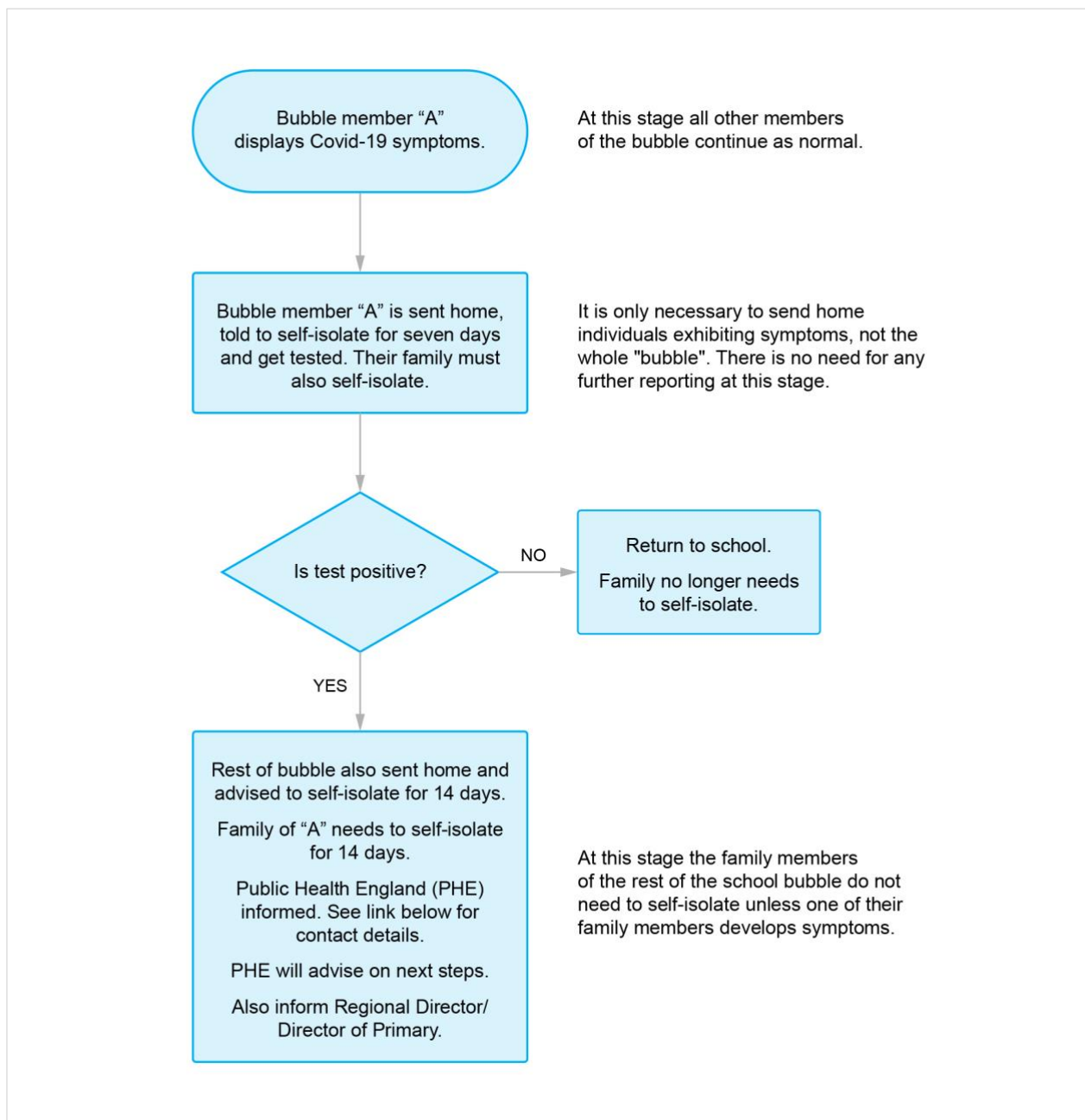


The following guidance is based on information provided by the Department for Education and Public Health England and is applicable to 31 May 2020. It will be reviewed before 1 June 2020.

Link to the original guidance [here](#) and [here](#).

Government guidance encourages minimising contact by grouping staff and pupils into a “social bubble”. This will usually consist of up to 15 pupils plus any teachers or support staff. In this example we have a school group “bubble” that consists of 15 pupils and a teacher.

Member “A” could be a pupil or an adult.



PHE regions and local centres: <https://www.gov.uk/guidance/contacts-phe-regions-and-local-centres>.